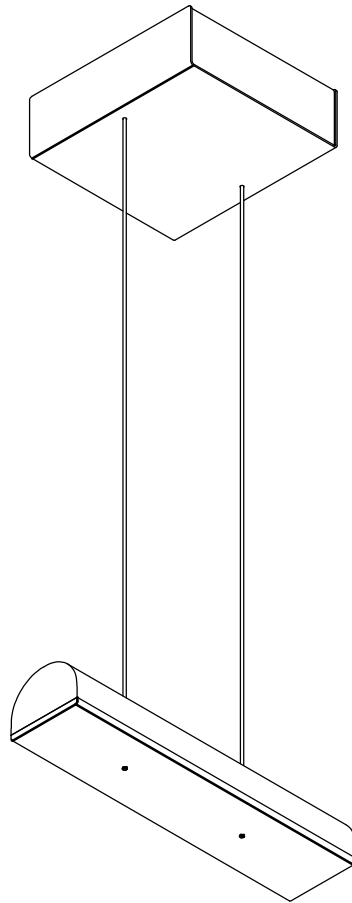


# HUTCHISON



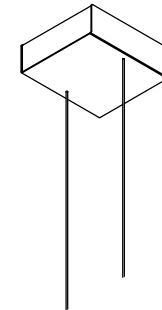
- To be installed by an electrician to an electrical box
- LED may only be changed by Lambert & Fils or other authorized personnel
- Use appropriate screws where necessary
- Use appropriate anchors and ensure your electrical box can hold the weight of the luminaire.
- Wear enclosed gloves when handling lamp
- Handle materials with care. Please consult lamp maintenance sheet on our web site



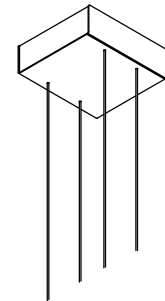
## PLEASE NOTE

THIS IS AN EXAMPLE OF THE HUTCHISON 01.  
HOWEVER, THE 02, 03 AND 04 FOLLOW  
THE SAME INSTALLATION PROCESS.

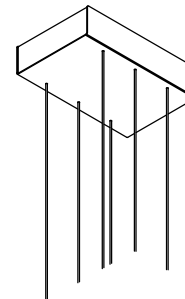
Hutchison 01



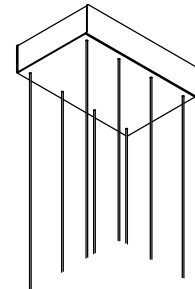
Hutchison 02



Hutchison 03



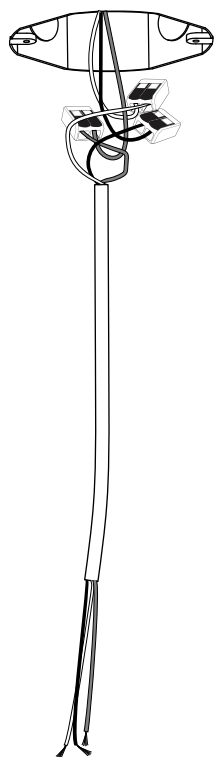
Hutchison 04



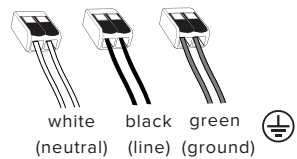
# INSTALL EXTENSION HARNESS

1

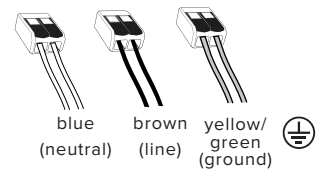
Connect the extension harness to the electrical box wires



for 120 V wiring

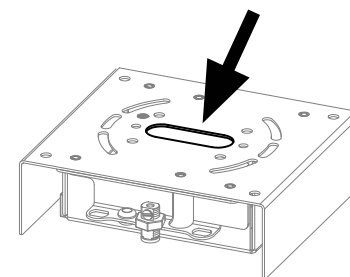
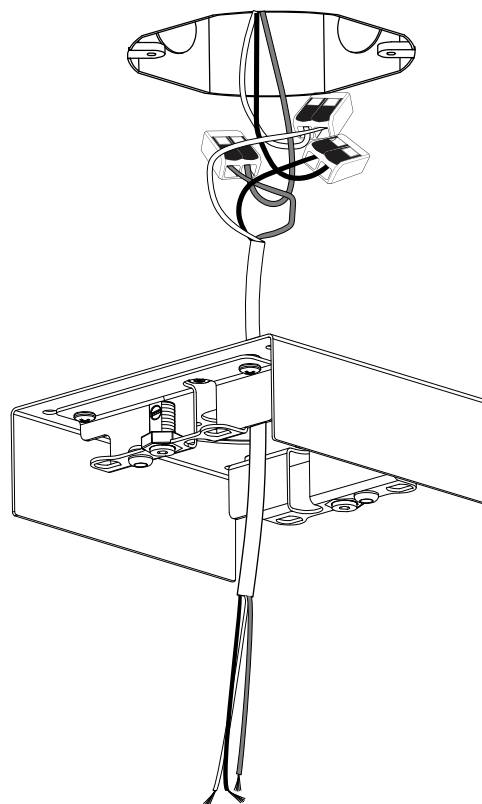


for 220-240 V wiring



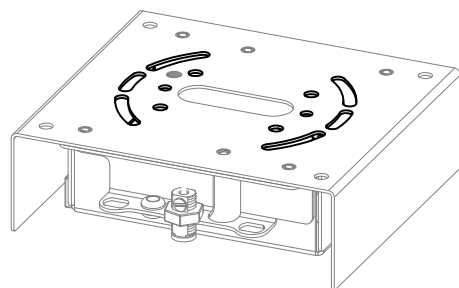
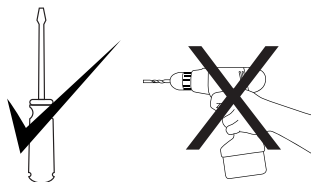
2

Pass the extension harness through center hole of canopy.



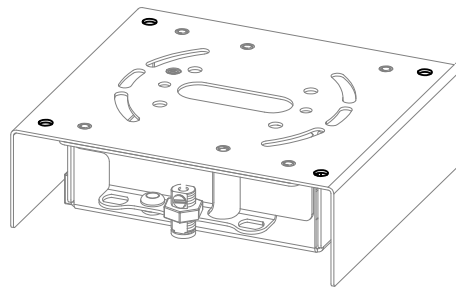
## MOUNT CANOPY BRACKET

3



To junction box

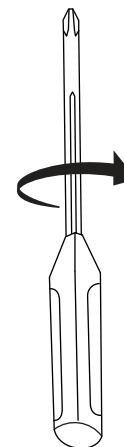
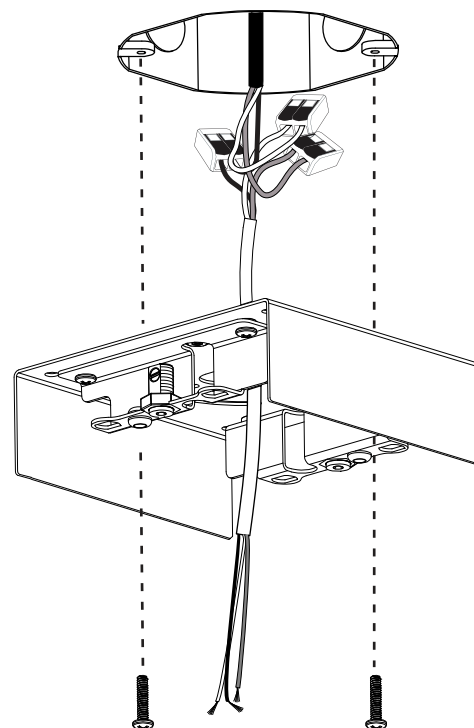
OR



directly to the ceiling



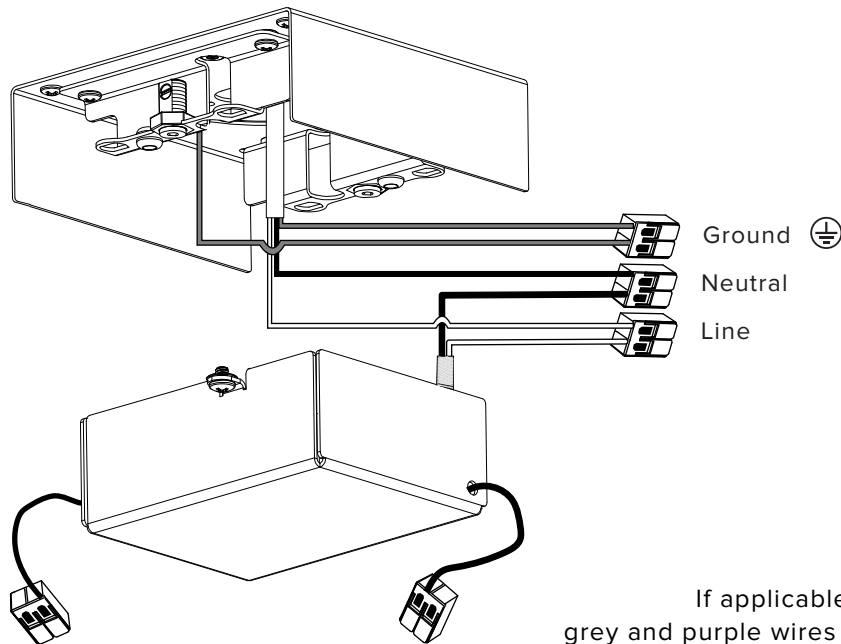
Use appropriate anchors.



# MAKE LINE/MAIN VOLTAGE CONNECTION TO ELECTRICAL BOX (AC)

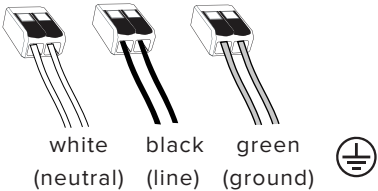
4

Connect the extension harness  
to AC input wires of the driver and  
connect ground from bracket to the harness.

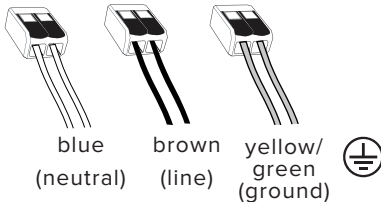


If applicable, use  
grey and purple wires for 0-10V or the  
orange DALI wires for dimming circuit  
before closing the driver housing.

for 120 V wiring

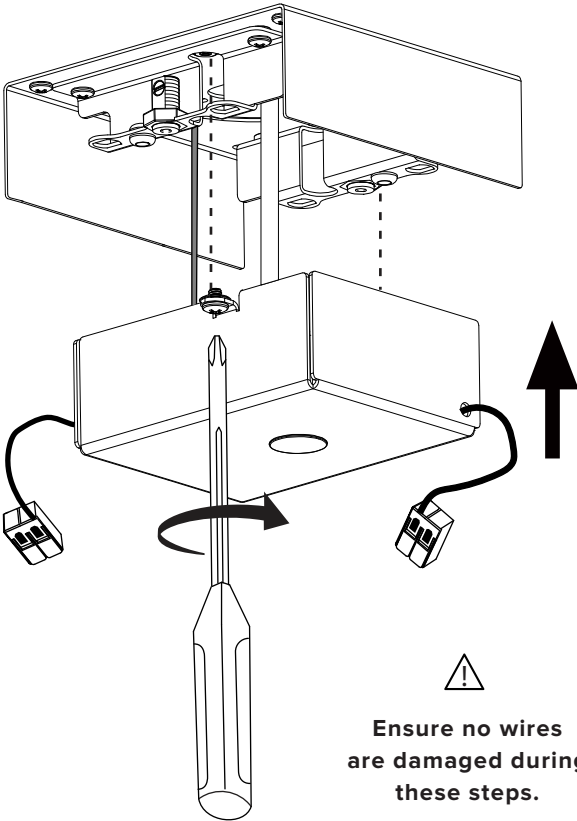


for 220-240 V wiring



5

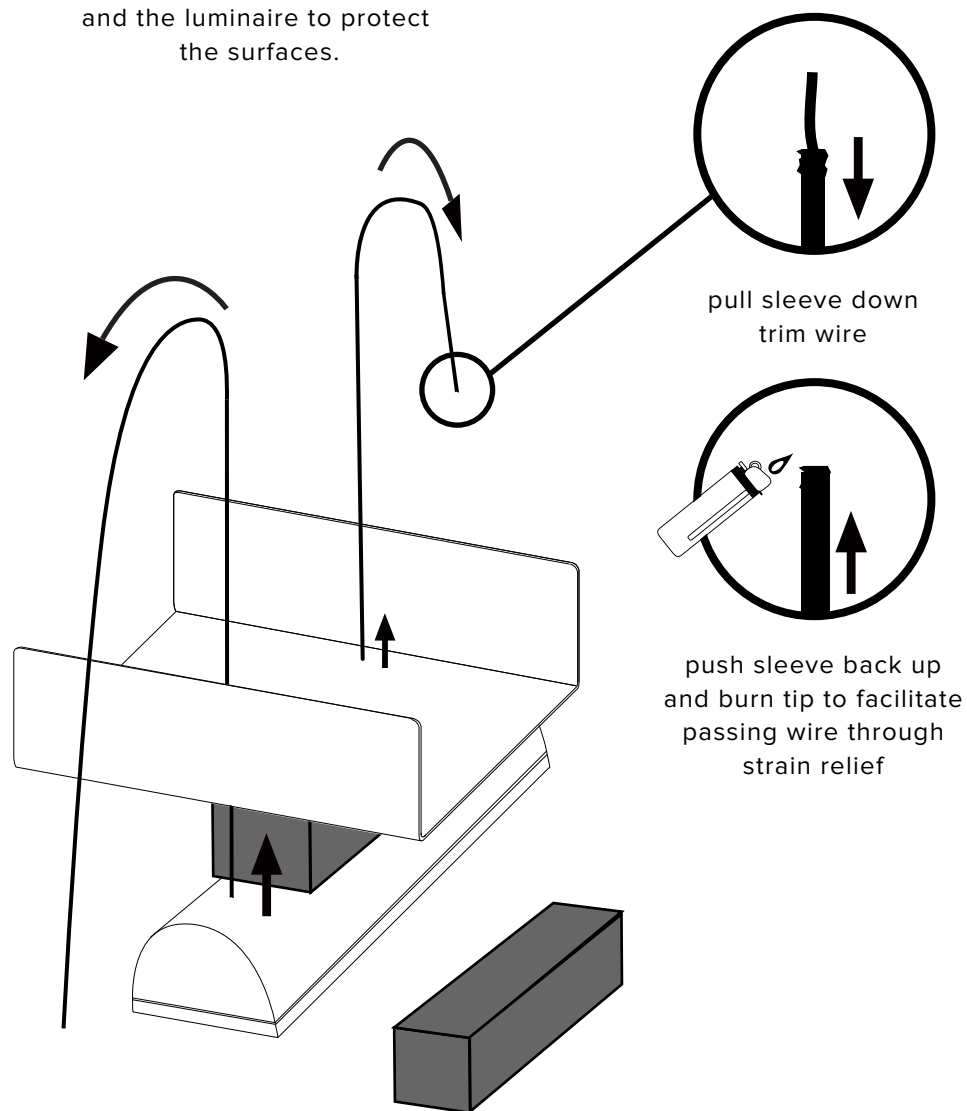
Screw in place the driver  
housing.



Ensure no wires  
are damaged during  
these steps.

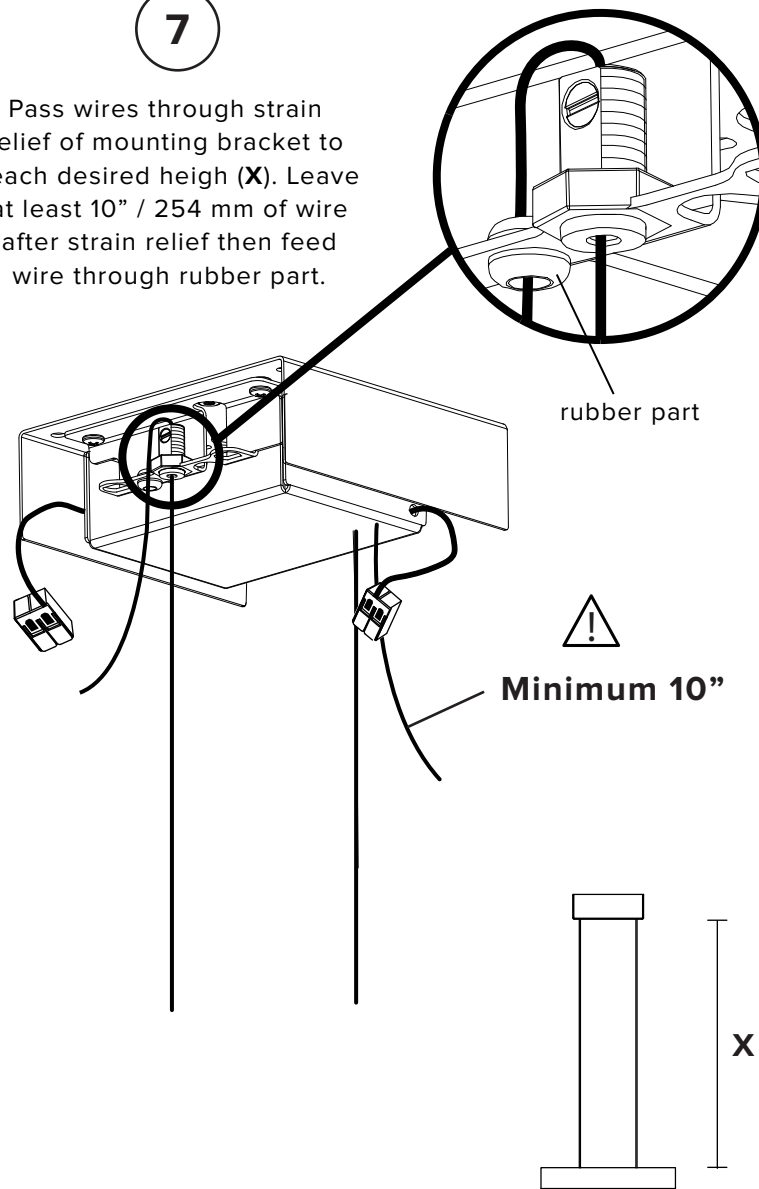
6

Pass wires through cover  
then place the provided  
foam spacer between the canopy  
and the luminaire to protect  
the surfaces.



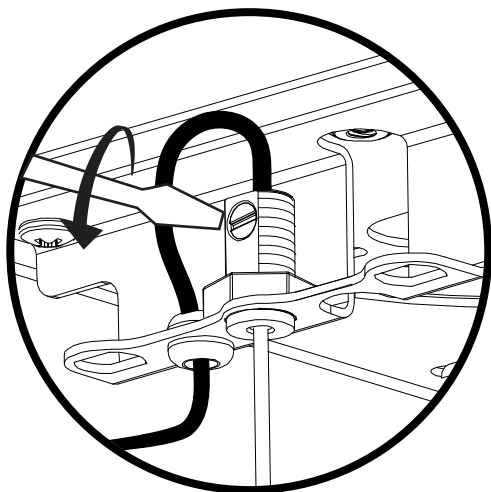
7

Pass wires through strain  
relief of mounting bracket to  
reach desired height (X). Leave  
at least 10" / 254 mm of wire  
after strain relief then feed  
wire through rubber part.



8

Tighten nylon set screw when  
desired length is achieved (**X**).

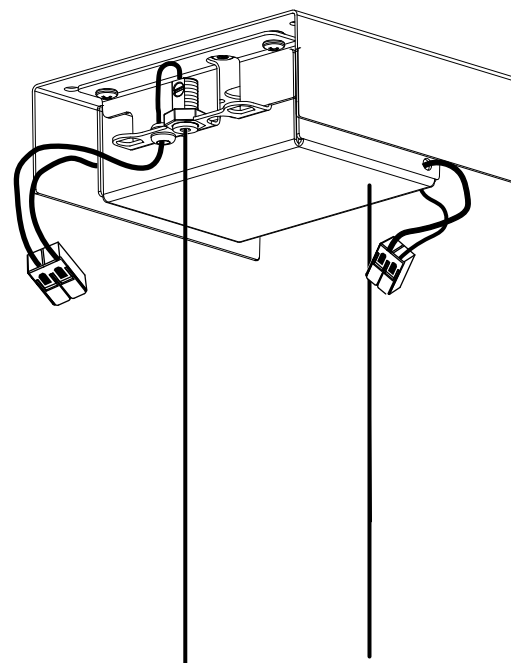


Micro adjustments  
can be made later.

## CONNECT DC WIRES ON BOTH SIDE OF HOUSING

9

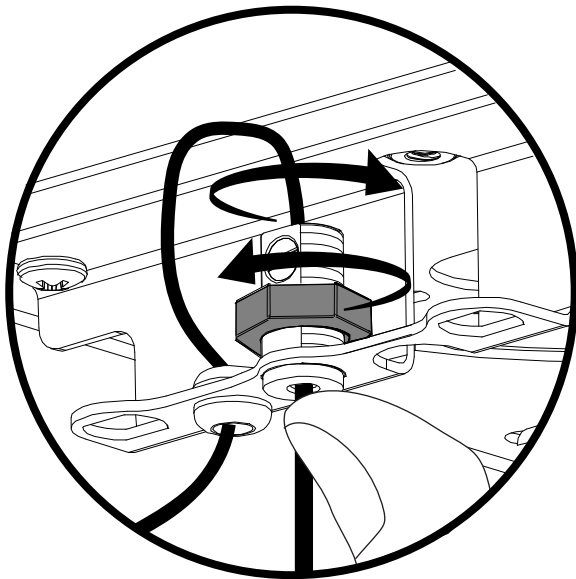
Red to grey/transparent (+)  
Black to black (-)



## MAKE MICRO ADJUSTMENTS

10

To level the luminaire, push up on the strain relief, then turn the brass nut to make any necessary adjustments.



Each wire should have equivalent tension on them

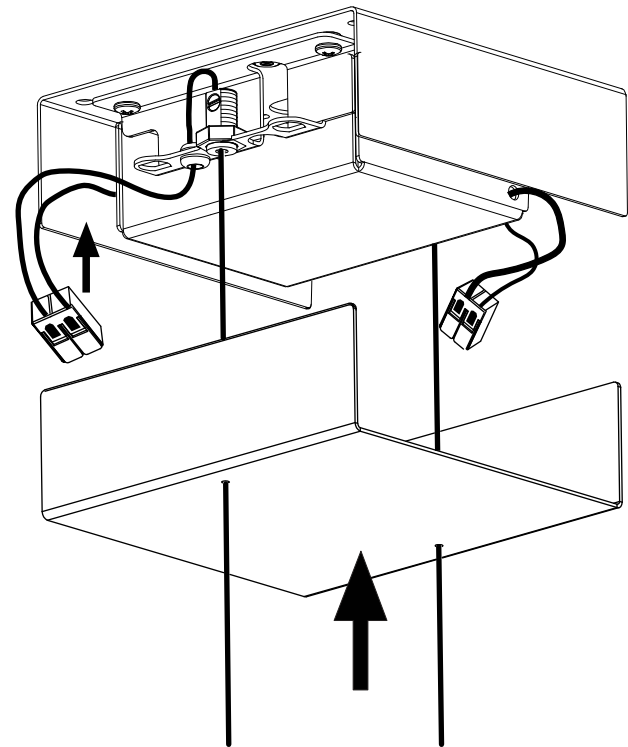


The brass nut must never exceed the top of the strain relief.

On the Hut 03 and Hut 04 versions adjust the four corner wires before the central wires

11

Replace canopy cover. Carefully push wires up into canopy.



Ensure no wires are damaged during this steps.