

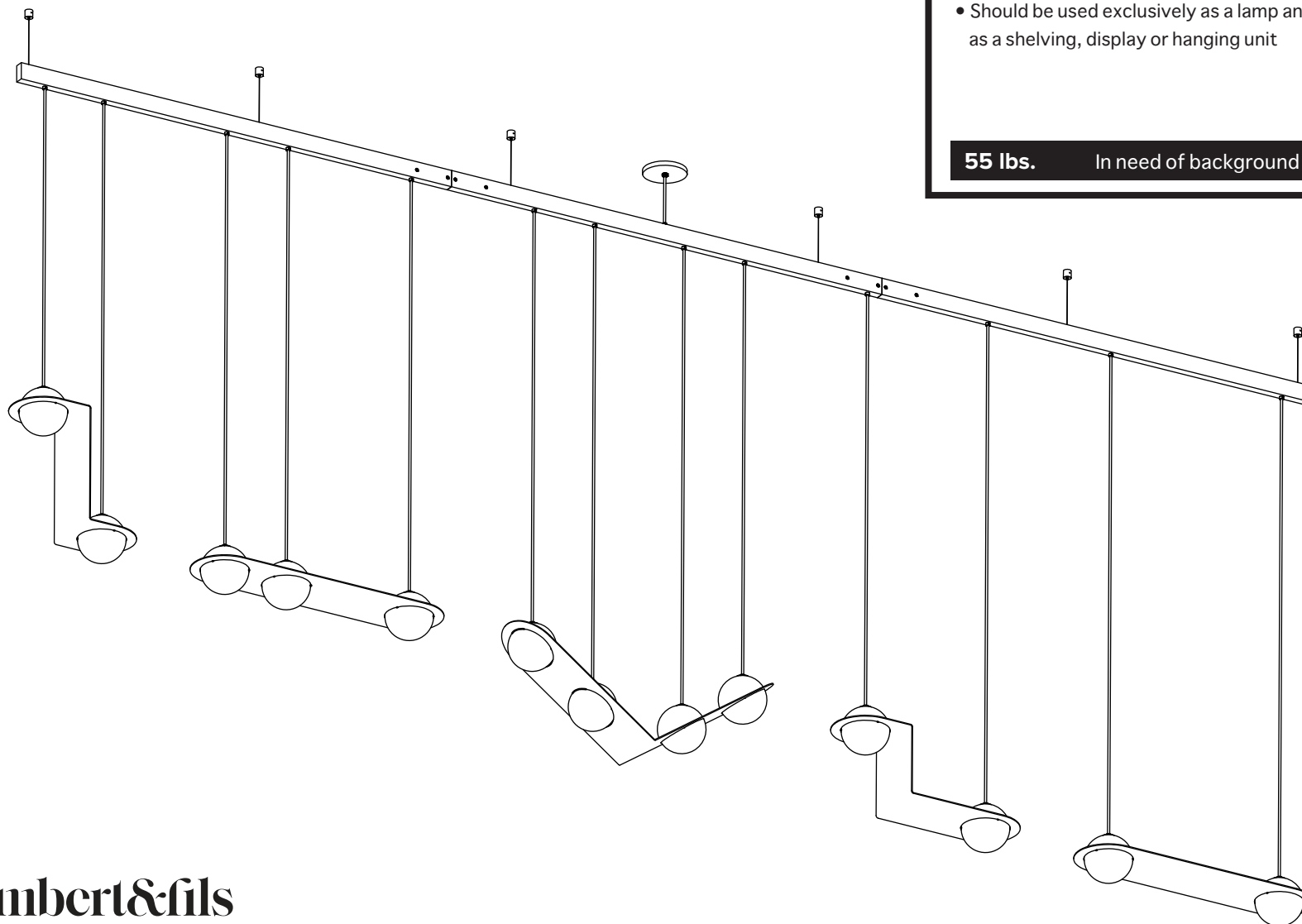


- To be installed by an electrician to an electrical box
- Use appropriate screws and anchors where necessary
- Wear enclosed gloves when handling lamp
- Handle materials with care. Please consult lamp maintenance sheet on our web site
- Should be used exclusively as a lamp and not as a shelving, display or hanging unit



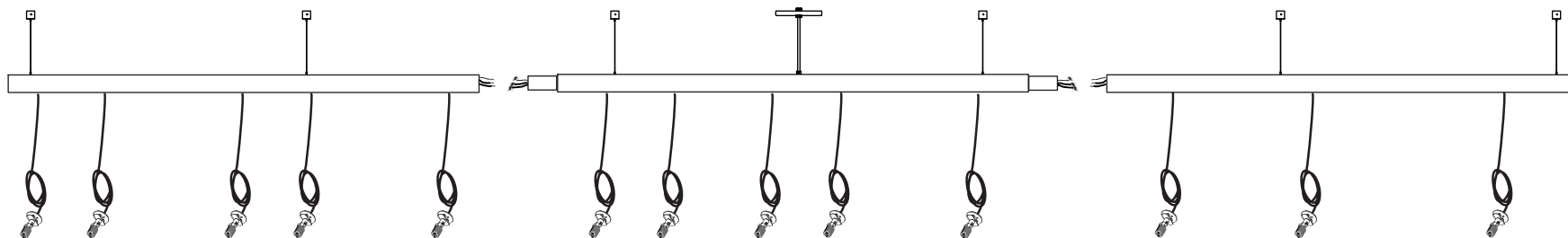
55 lbs.

In need of background nailing



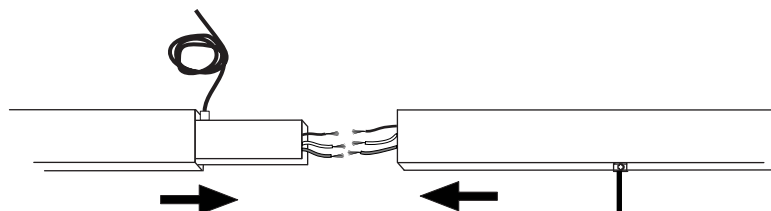
1

To ensure easy assembly and efficient shipping, the lamp has been shipped as three parts that are assembled together

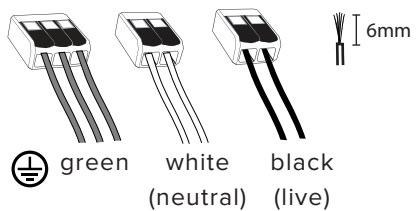


2

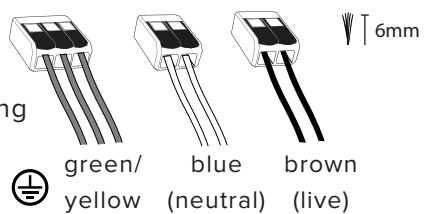
Make connection between bars.



for 120 V wiring

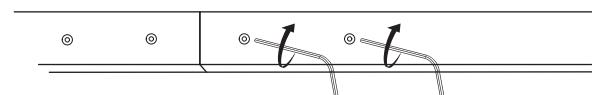


for 220-240 V wiring



3

Carefully place wires and Wagos in between connecting plates of the bars before sliding the bars together.



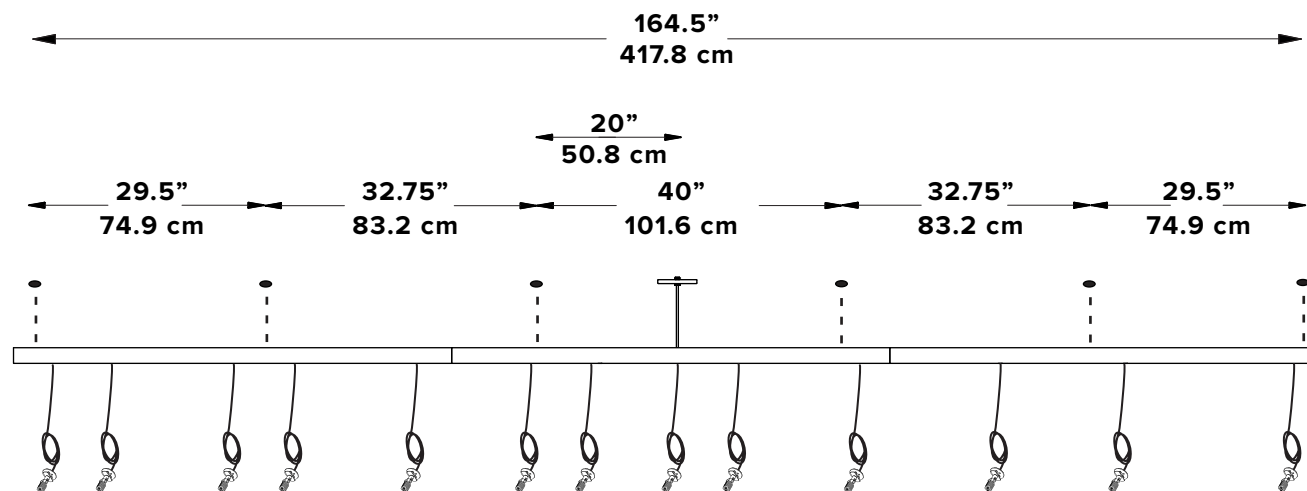
view from the top



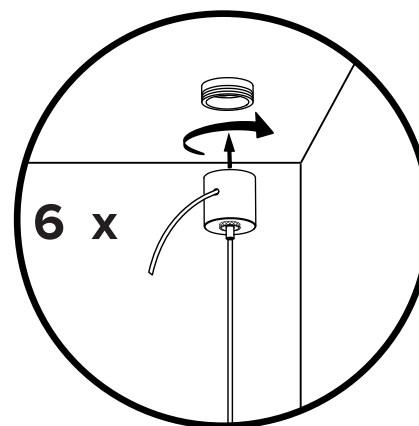
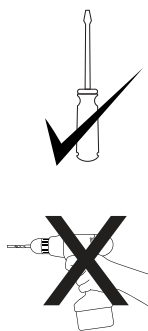
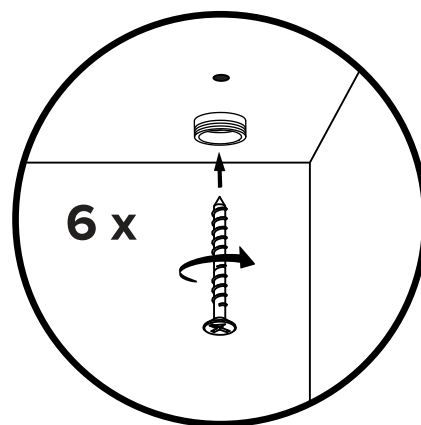
Ensure no wires are clipped or pinched during this operation.

4

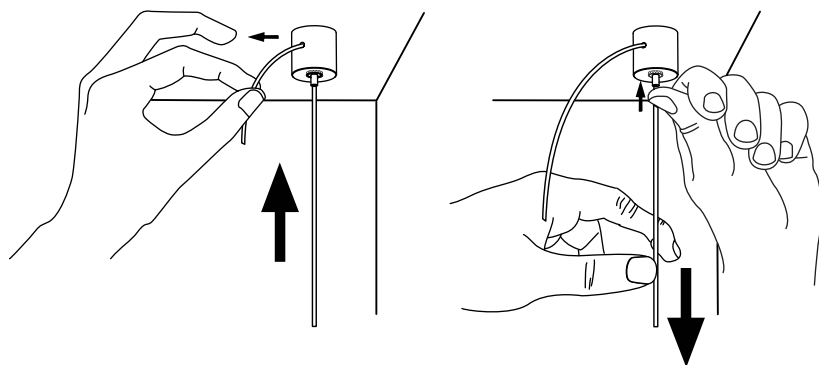
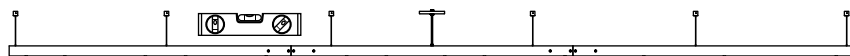
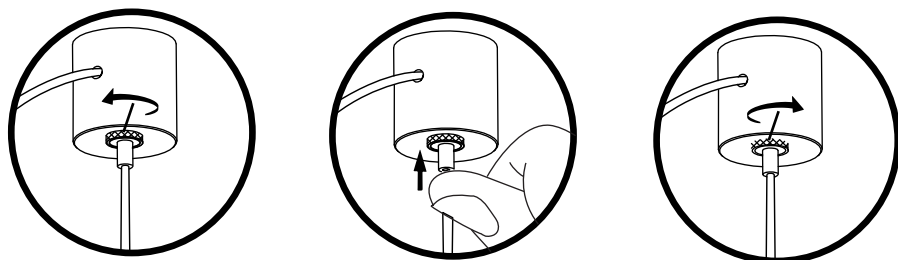
Mark anchor locations
using your electrical box
and canopy as a guide



5

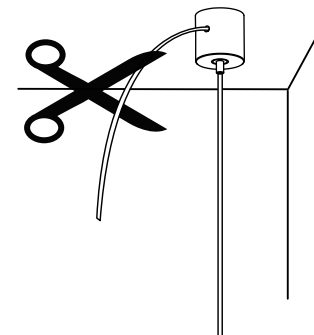


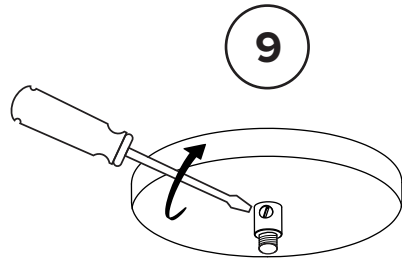
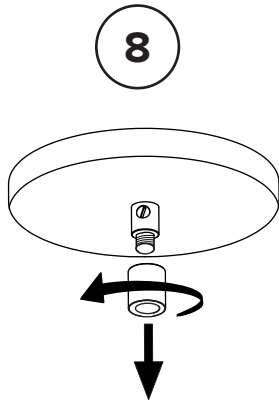
6



7

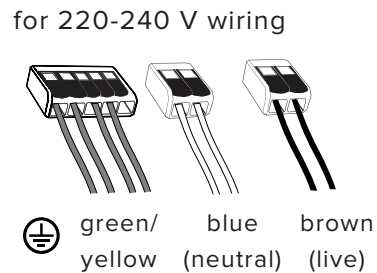
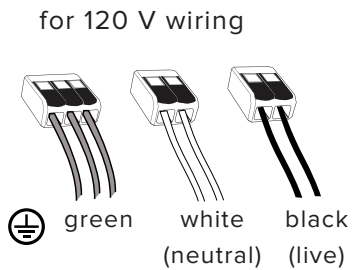
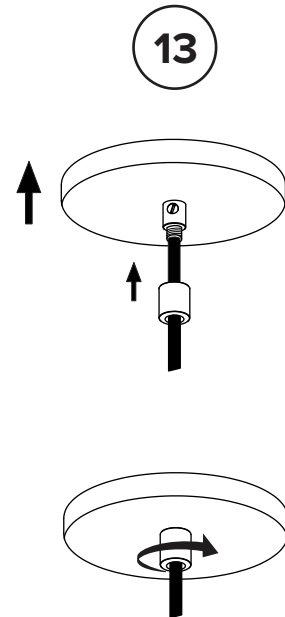
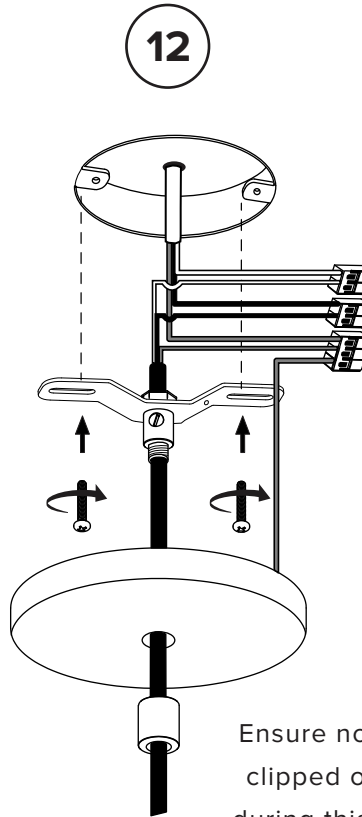
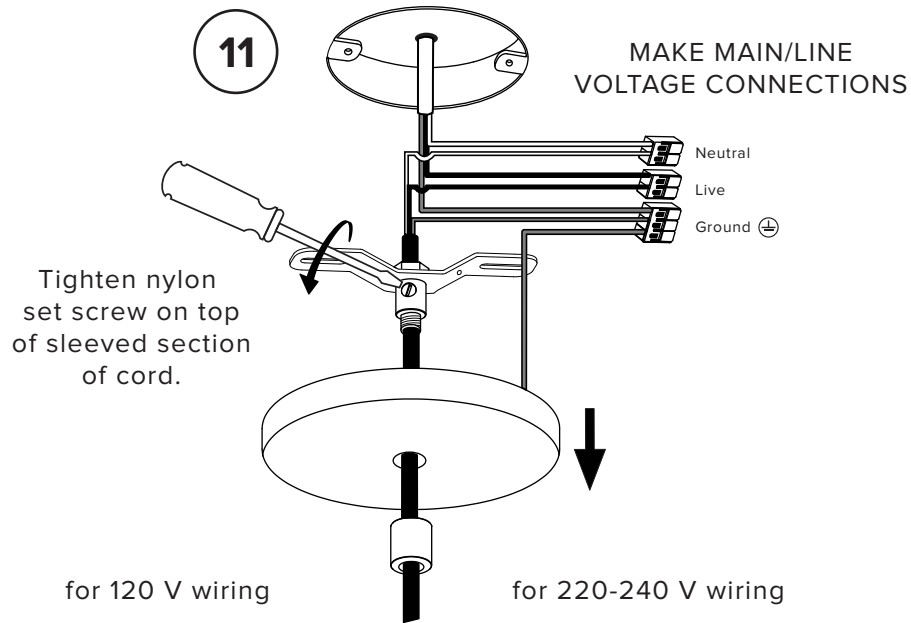
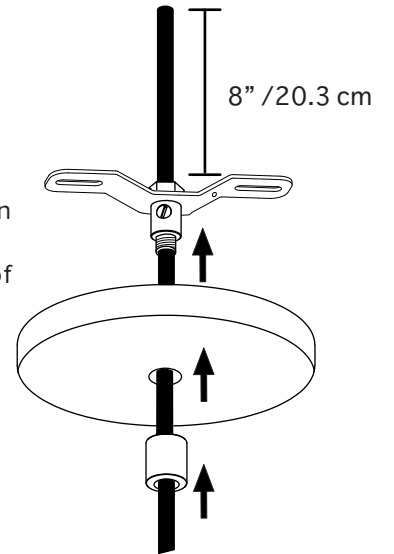
Trim extra cable when
desired level and height
are achieved



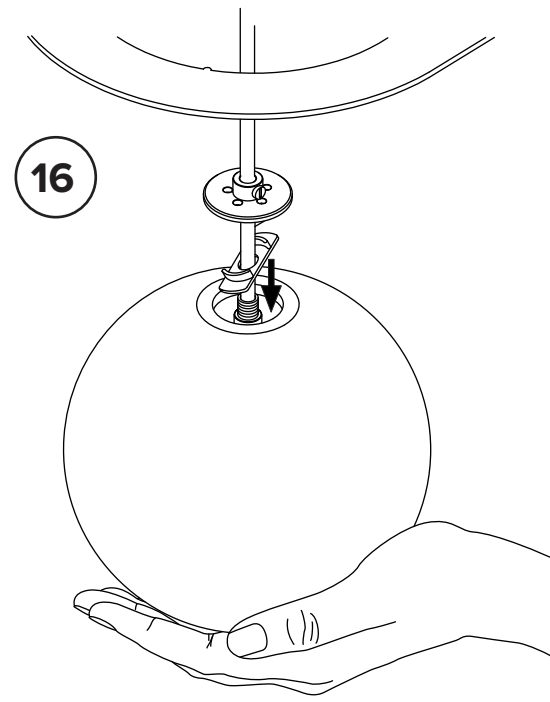
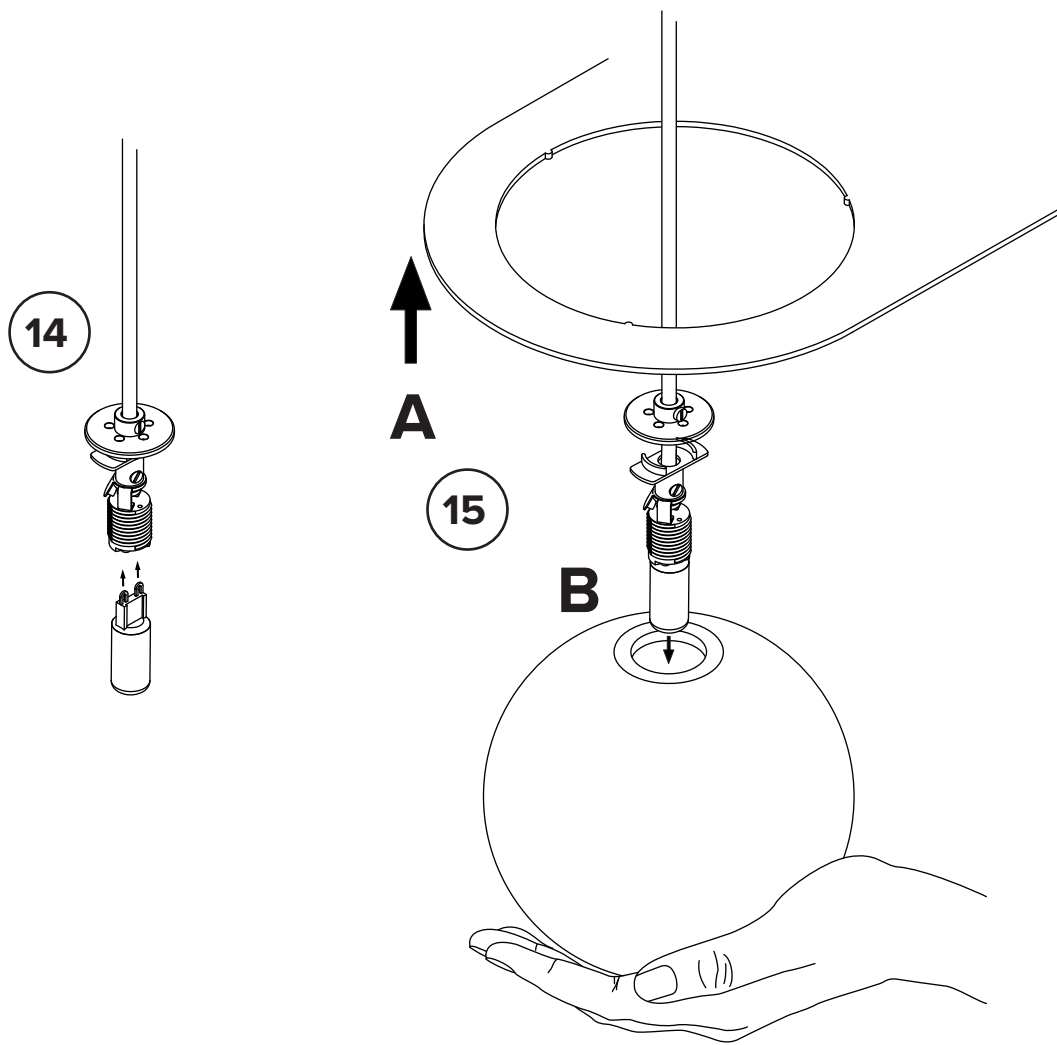


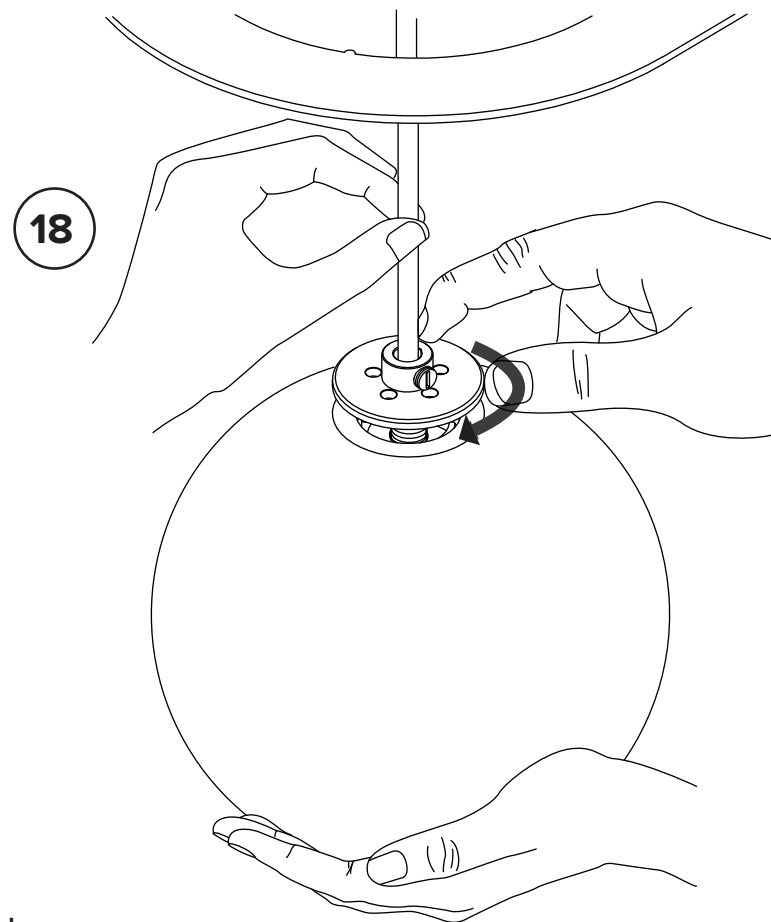
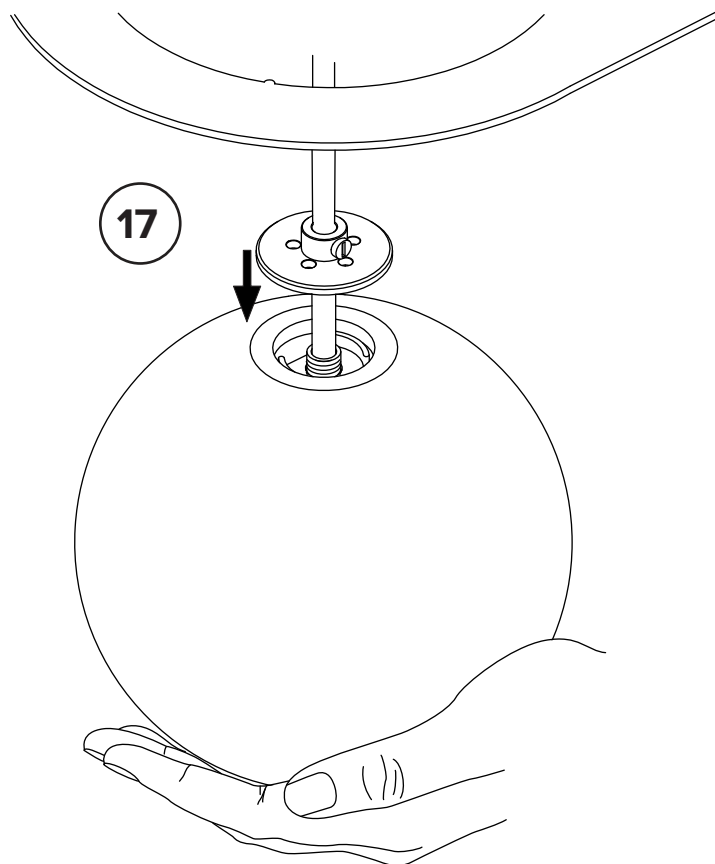
10

Feed line/main voltage cord A through then adjust cord length. Leave a minimum of 8" / 20.3 cm of cord after the bracket.



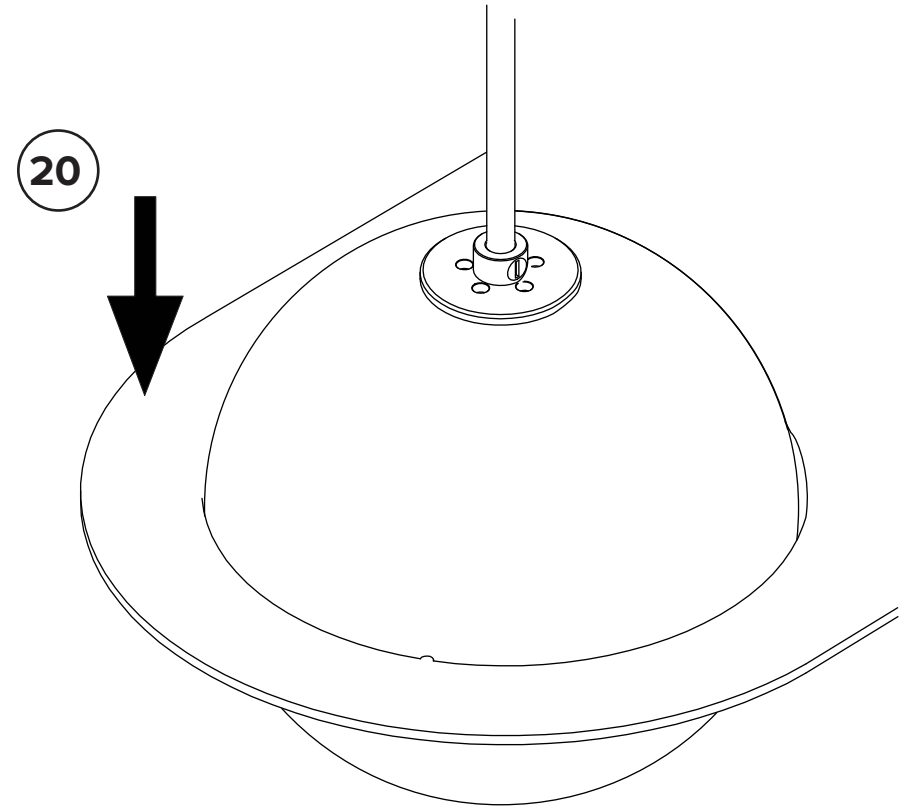
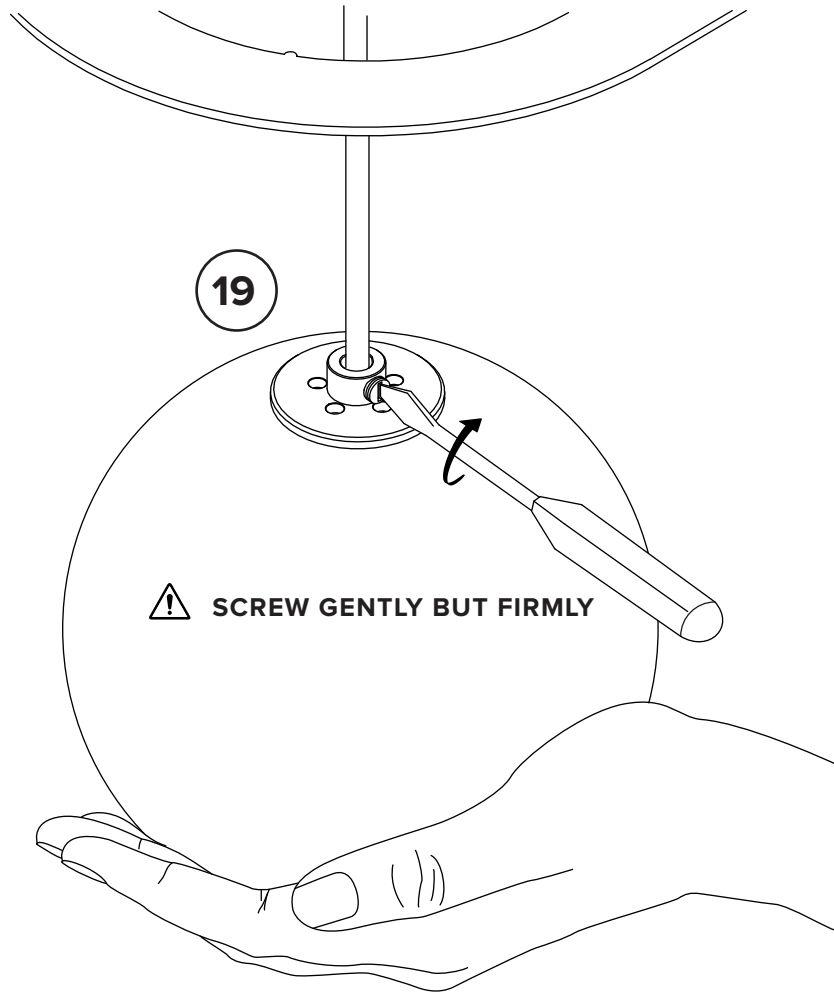
Ensure no wires are clipped or pinched during this operation.





* To ensure safety,
**PLEASE FOLLOW THESE STEPS
CAREFULLY**

* To ensure safety,
**PLEASE FOLLOW THESE STEPS
CAREFULLY**



21

Make sure the globes are level by micro-adjusting the wire lengths.

SCREW GENTLY BUT FIRMLY

