



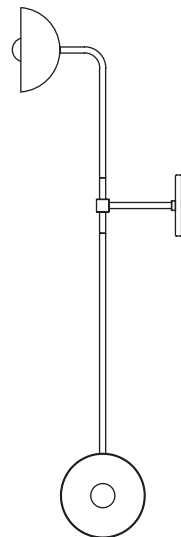
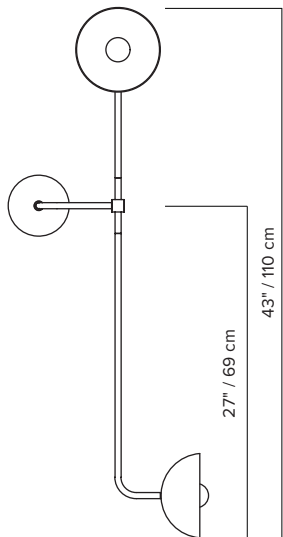
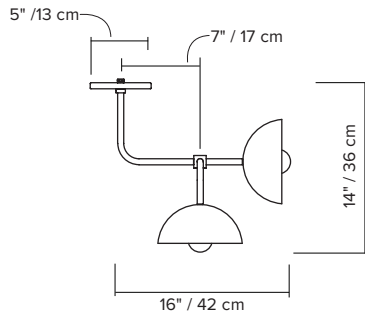




## BEAUBIEN DOUBLE SHADE

The Beaubien Collection's strong black lines bend in and out of space, moving effortlessly between simplicity and ornamentation. Round and cubic brass connectors complete the lamps' structures and add a rich material contrast to the powder coated rods. The collection's industrial and graphic aesthetic is imbued with a palette of influences, from traditional Chinese screens to the Memphis movement. Each influence strengthens the collection, creating nuance within its timeless character.

- type:** wall
- construction:** powder coated steel and aluminum body  
powder coated aluminum shade  
brass hardware  
milk glass globe
- specifications:** source: LED lamp provided (G9 base)  
power consumption: 2x 3,5W  
lumen output: 364lm  
colour temperature: 2700K included  
\* 3000K available upon request  
colour rendering index: 80 CRI standard  
\* ≥ 90 CRI upon request  
expected lifetime: 25 000h
- control:** refer to our recommended list of dimmer models
- weight:** 3 lb / 1.4 kg
- certifications:**    
- warranty:** 2 years

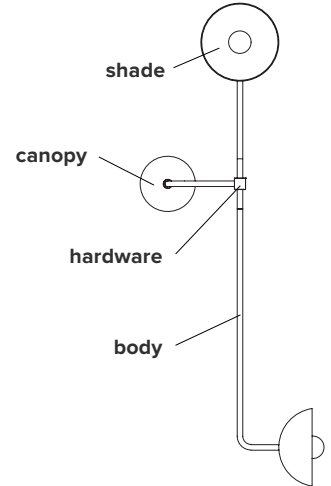


 G50 Ø ±2" / 50 mm

\*dimensions are approximate and may vary slightly

## ORDER GUIDE: SKU

COLLECTION		MODEL	FINISH		HARDWARE		INSTALLATION	
<b>BEA</b>	beaubien	<b>04</b>	<b>BK</b>	black	<b>BR</b>	brass	<b>A</b>	standard
					<b>GR</b>	graphite	<b>B</b>	reverse
<b>BEA</b>		<b>04</b>	<b>BK</b>		<b>BR</b>		<b>A</b>	= <b>BEA04BKBRA</b>
								<b>example</b>



### FINISH



textured  
black

### HARDWARE

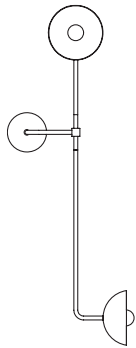


graphite

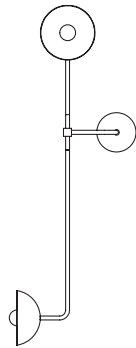


brass

### INSTALLATION



A - standard



B - reverse

\*Luminaire may also be installed horizontally

\*\*Luminaire is not be installed to the ceiling

### NOTES:

- must be installed by an electrician
- not protected against liquids (refer to IP20)
- additional charges for modifications or for special orders
- please refer to maintenance sheet on website for cleaning instructions

## DIMMER SPECIFICATIONS

### DIMMER LIST COMPATIBILITY FOR G9 LED BULBS – 120V

The dimming technology offering the best results is ELV (electronic low voltage) dimmers with reverse phase or trailing edge control.

DIMMER BRAND	MODEL NUMBER	MIN LEVEL	MAX LEVEL	FLICKERING	OVERALL QUOTE
LUTRON - MAESTRO	MAELV-600	0%	100%	0%-10%	good
LUTRON - SKYLARK	SELV-300P	0%	100%	no	very good
LUTRON - SKYLARK	SELV-303P	0%	100%	no	very good
LUTRON - SKYLARK	CTELV-303P	0%	100%	no	very good
LUTRON - DIVA	DVELV-300P	0%	100%	no	very good
LEGRAND - ADORNE	TRUE UNIVERSAL	30%	100%	no	good

### DIMMER LIST COMPATIBILITY FOR G9 LED BULBS – 230V

DIMMER BRAND	MODEL NUMBER	MIN LEVEL	MAX LEVEL	FLICKERING	OVERALL QUOTE
VARILIGHT	V-PRO	2%	100%	no	very good
LEGRAND - NILOÉ	3 996 35	15%	87%	no	good
NIKO	310-0280X	5%	94%	no	very good
NIKO	310-0190X	1%	100%	no	very good

\*Other dimmers can yield good results and we recommend conducting your own test before final installation.

## EU ENERGY LABEL

