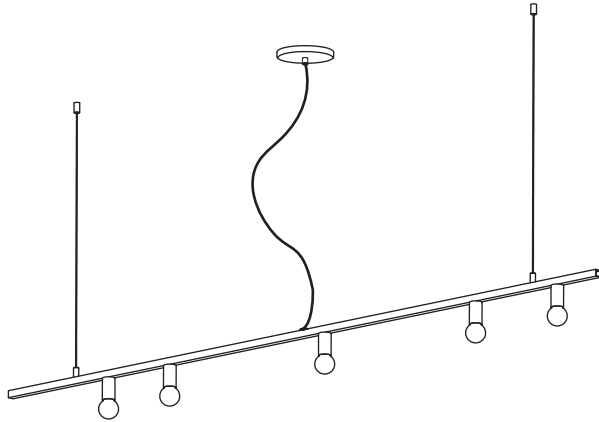
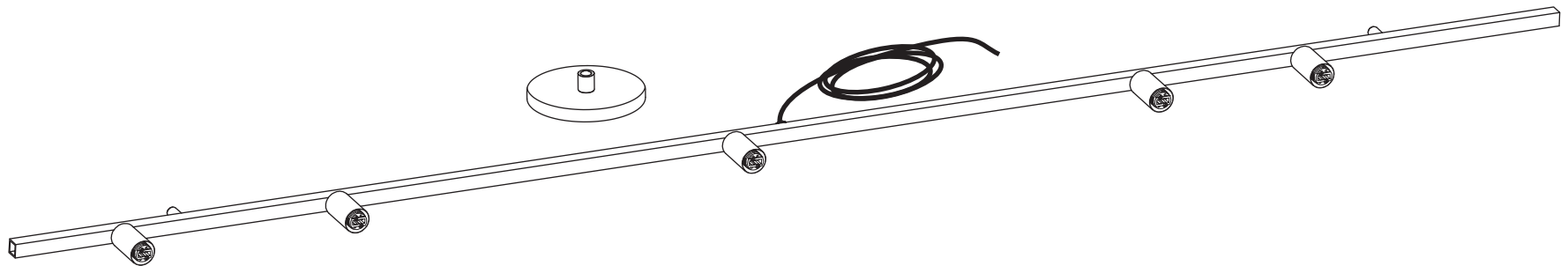


DOT LINE SUSPENSION

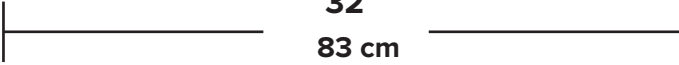


- To be installed by an electrician to an electrical box
- Use appropriate screws and anchors where necessary
- Wear enclosed gloves when handling lamp
- Handle materials with care. Please consult lamp maintenance sheet on our web site
- Should be used exclusively as a lamp and not as a shelving, display or hanging unit

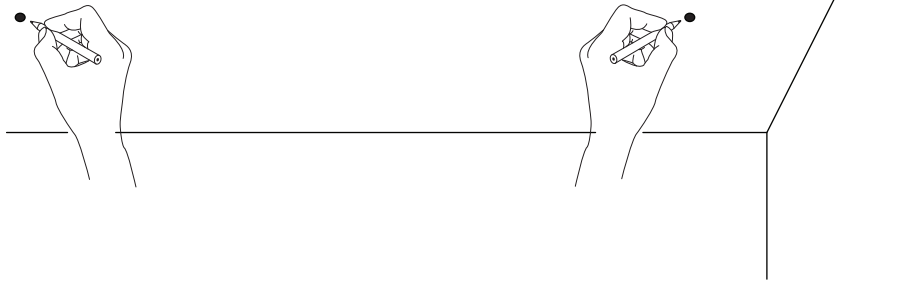
lamp weight **11 lbs / 5 kg**



1

DOT11A |  32"
83 cm

DOT11B |  56"
142 cm



2

Your luminaire comes with
either stainless steel cables or
beaded chain hangers.

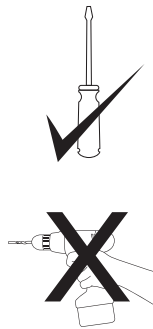
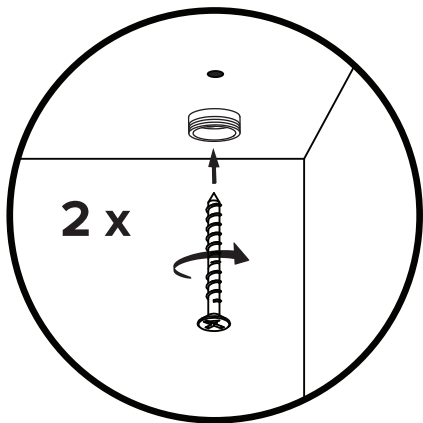
Stainless steel cable instructions: steps 3-6.

Beaded chain instructions skip to: steps 7-10.



**Do not install at less
than 4" from the ceiling**

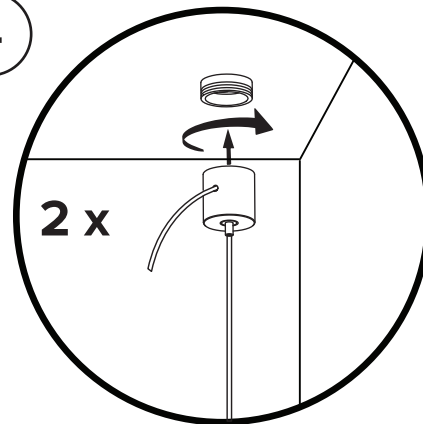
3



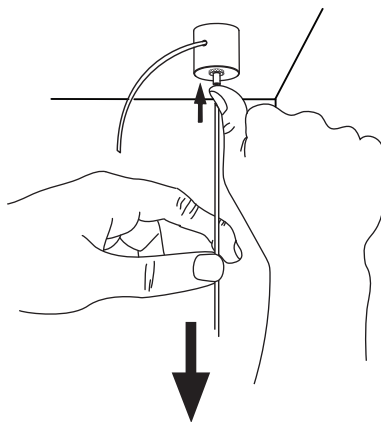
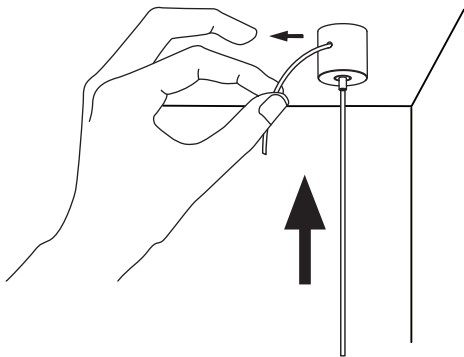
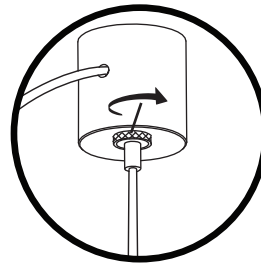
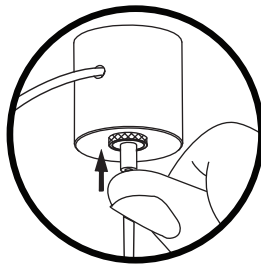
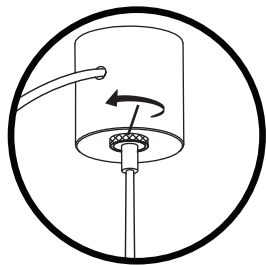
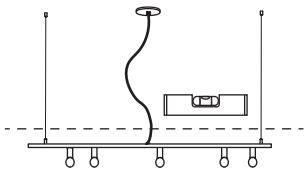
* Make sure to use appropriate anchors

Each anchor must be able to support 27 lbs / 13 kg

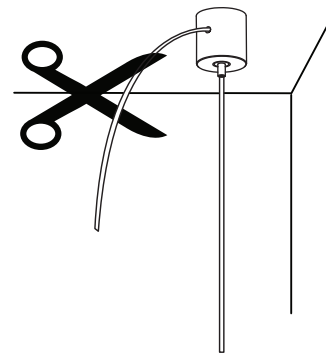
4



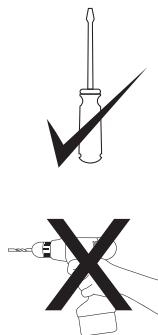
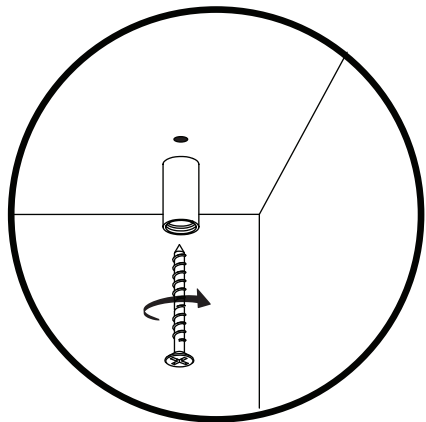
5



6



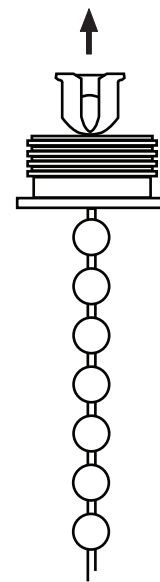
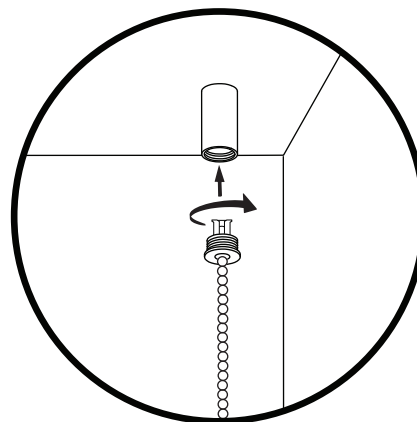
7



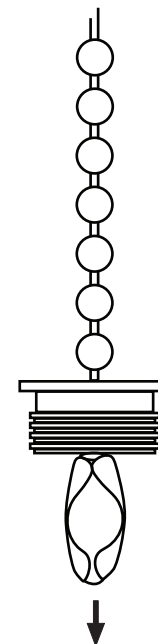
* Make sure to use appropriate anchors

Each anchor must be able to support
27 lbs / 13 kg

8

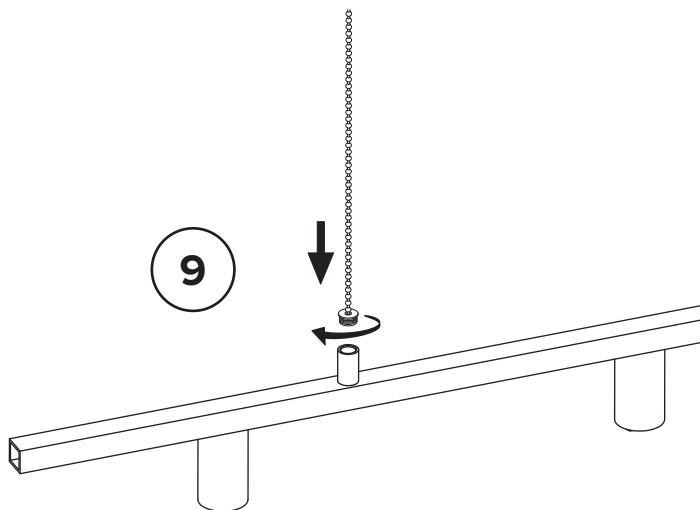


Ceiling



Luminaire

9



10

