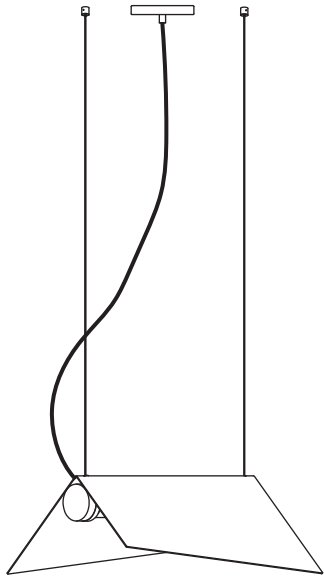



CLARK SUSPENSION


2 x  1 x  1 x  2 x  2 x 

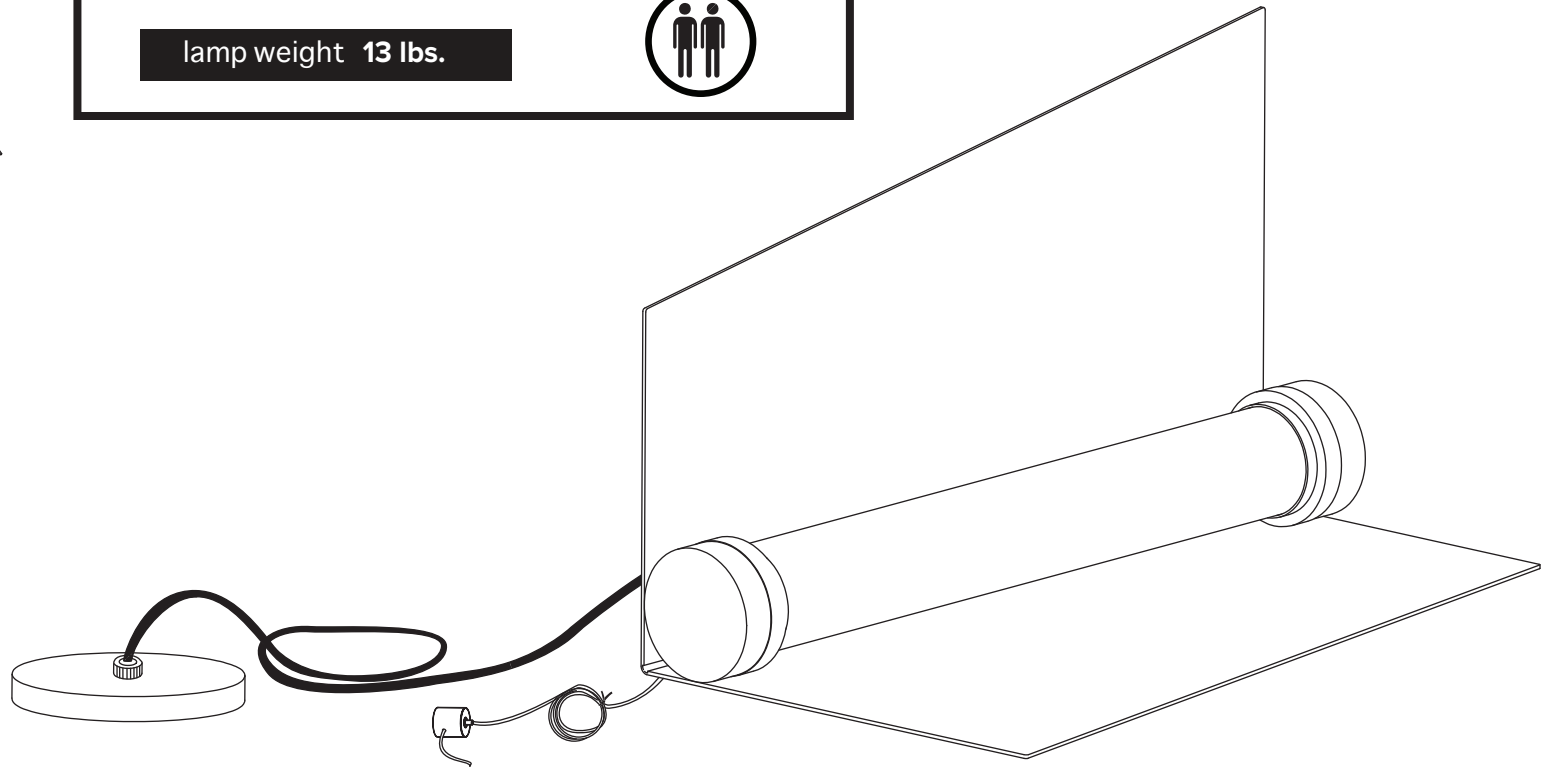


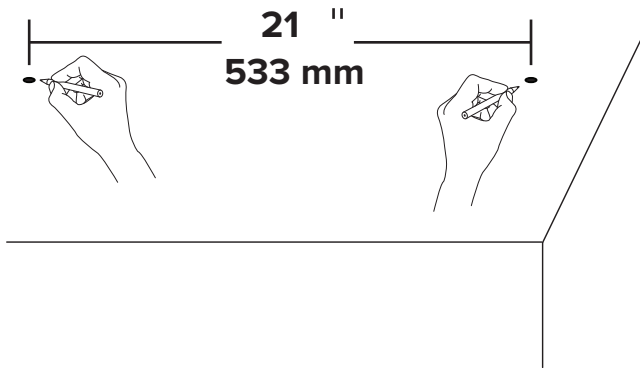


- To be installed by an electrician to an electrical box
- Use appropriate screws and anchors where necessary
- Wear enclosed gloves when handling lamp
- Handle materials with care. Please consult lamp maintenance sheet on our web site

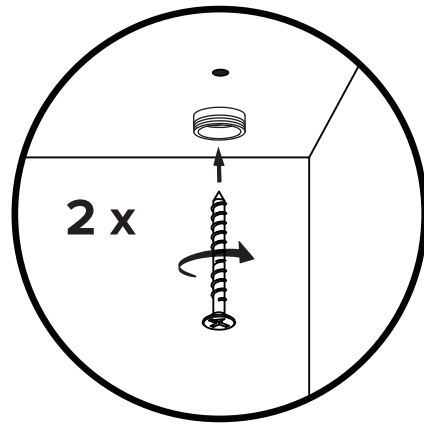
lamp weight 13 lbs.





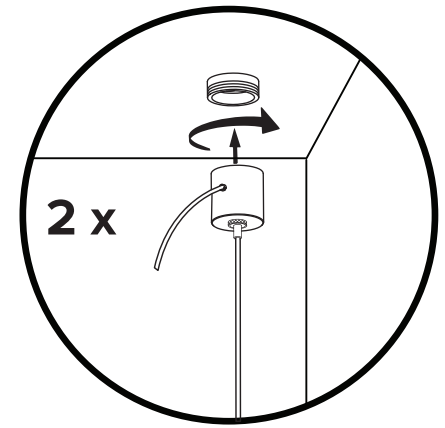
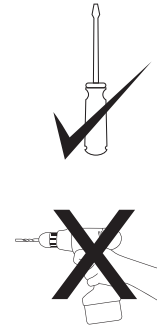


1

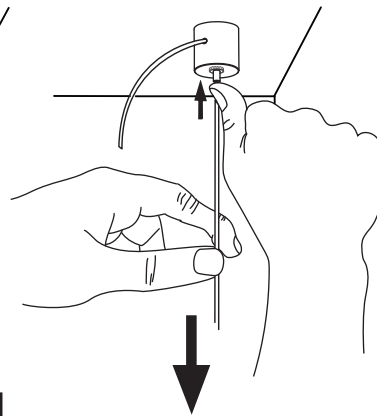
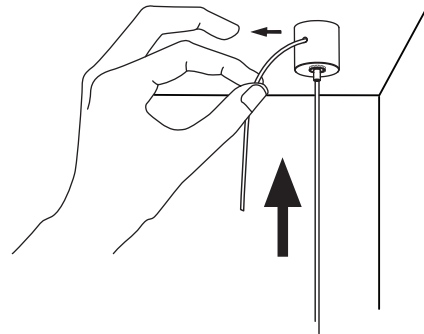
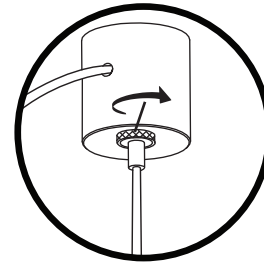
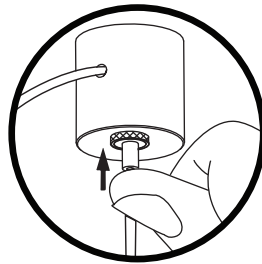
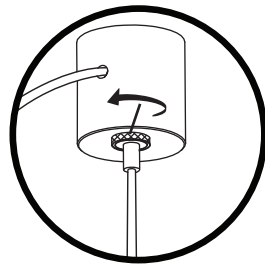
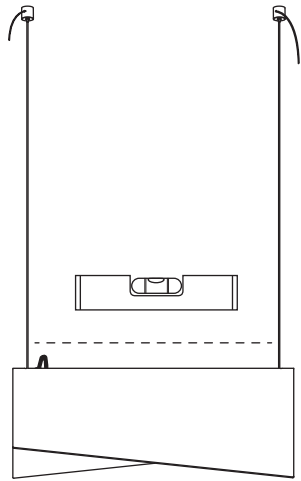


* Use appropriate anchors

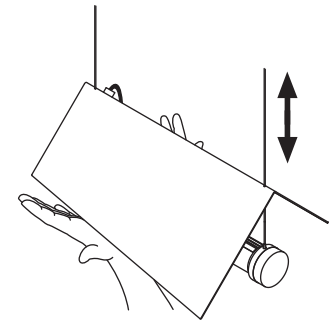
2

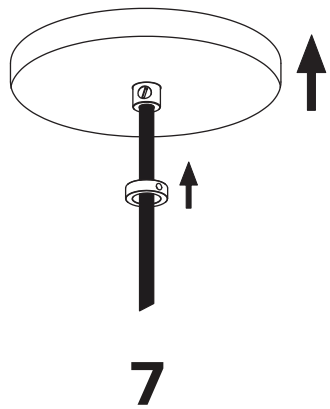
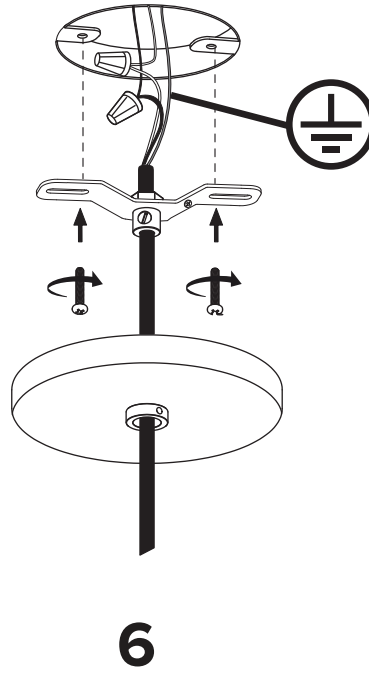
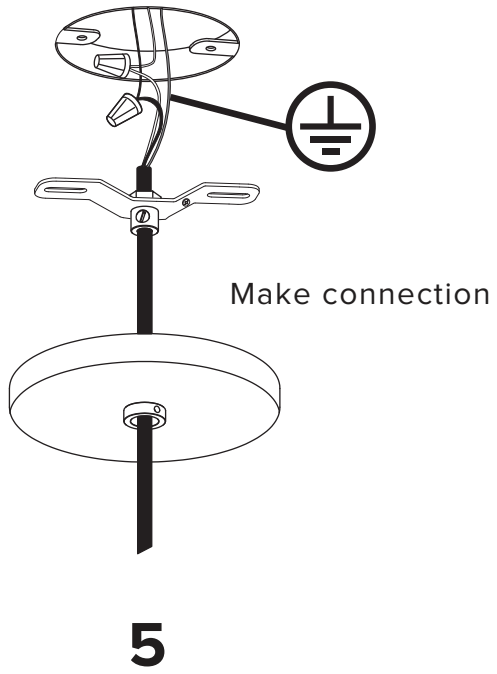


3



4





* Screw gently, but firmly

