

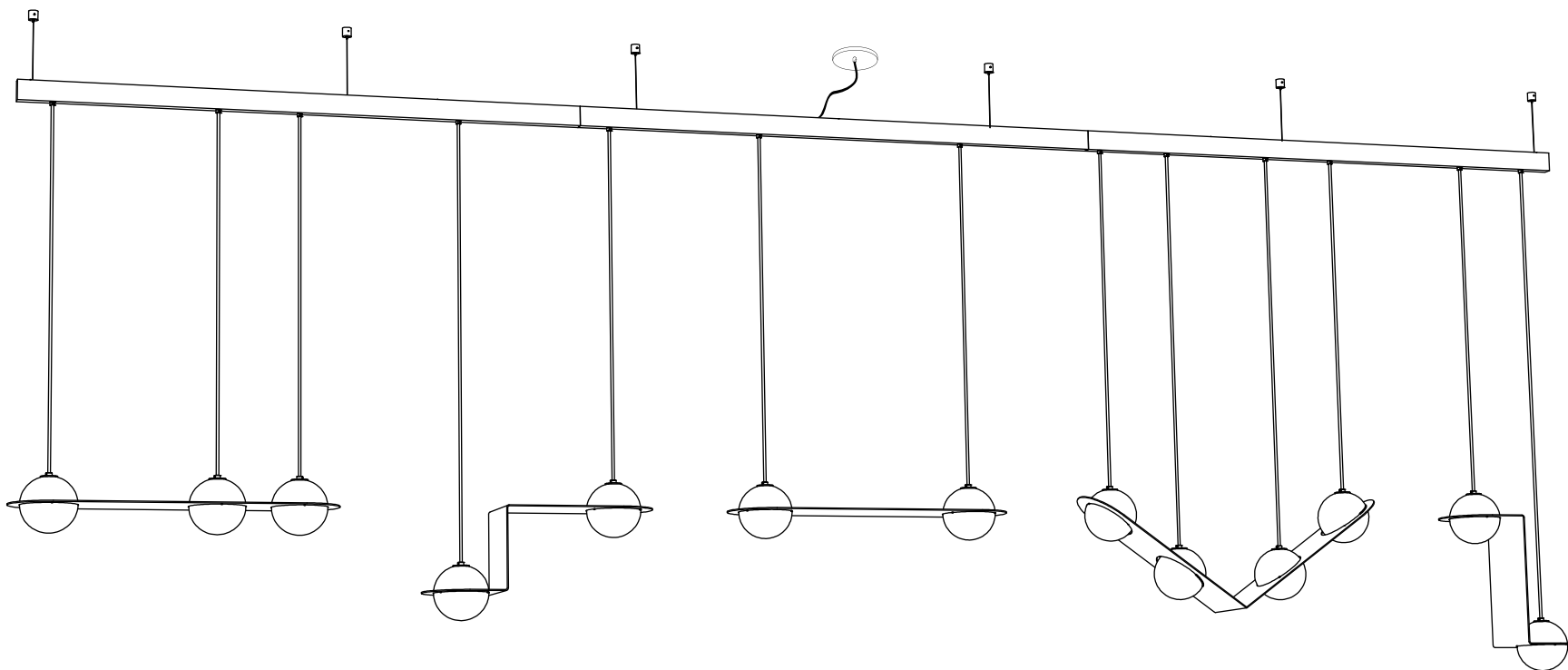


- To be installed by an electrician to an electrical box
- Use appropriate screws where necessary
- Wear enclosed gloves when handling lamp
- Handle materials with care. Please consult lamp maintenance sheet on our web site
- Should be used exclusively as a lamp and not as a shelving, display or hanging unit



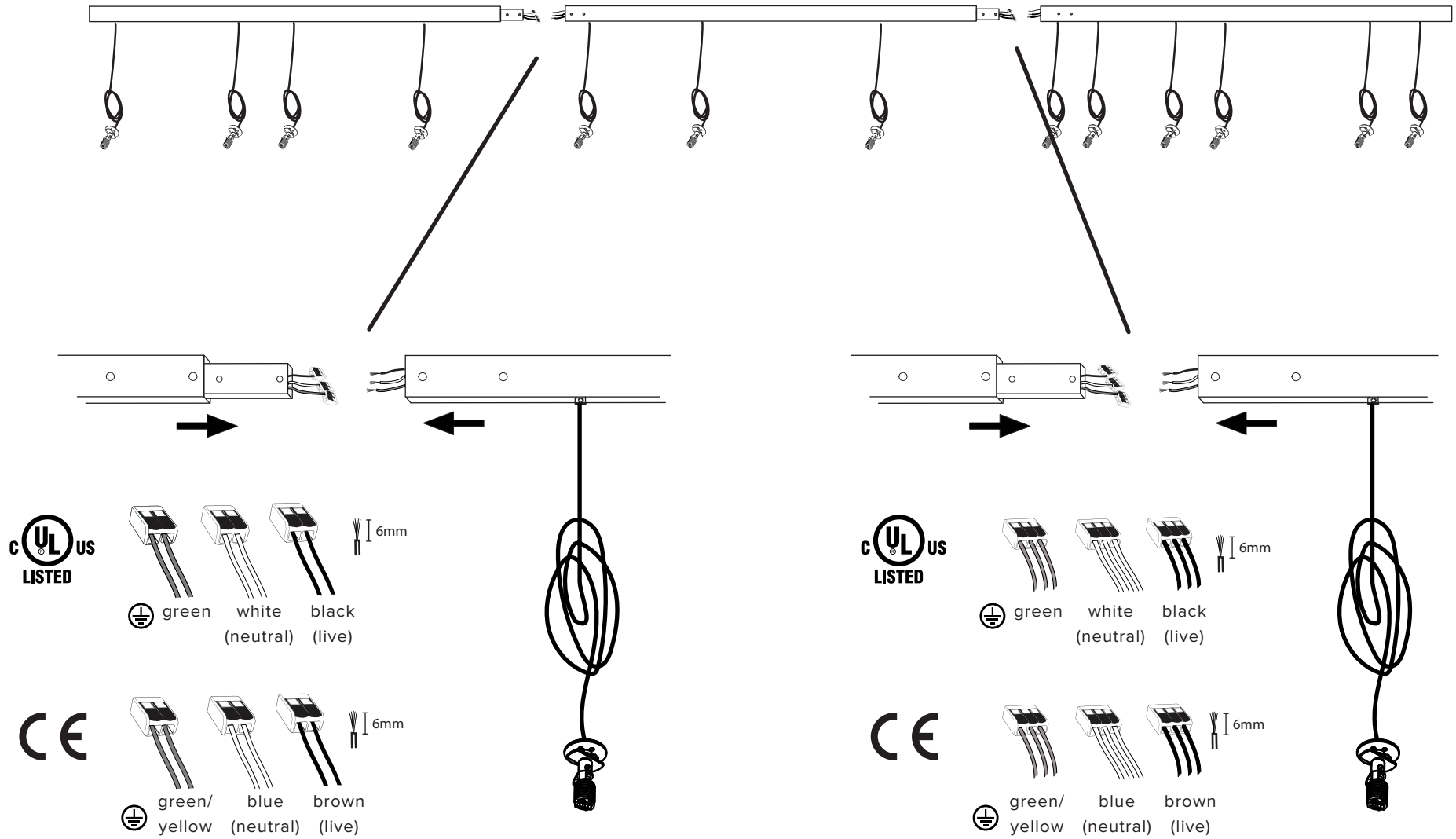
55 lbs.

In need of background nailing

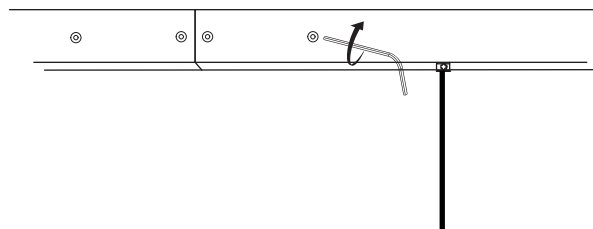


1

To ensure easy assembly and efficient shipping, the lamp has been shipped as three parts that are assembled together



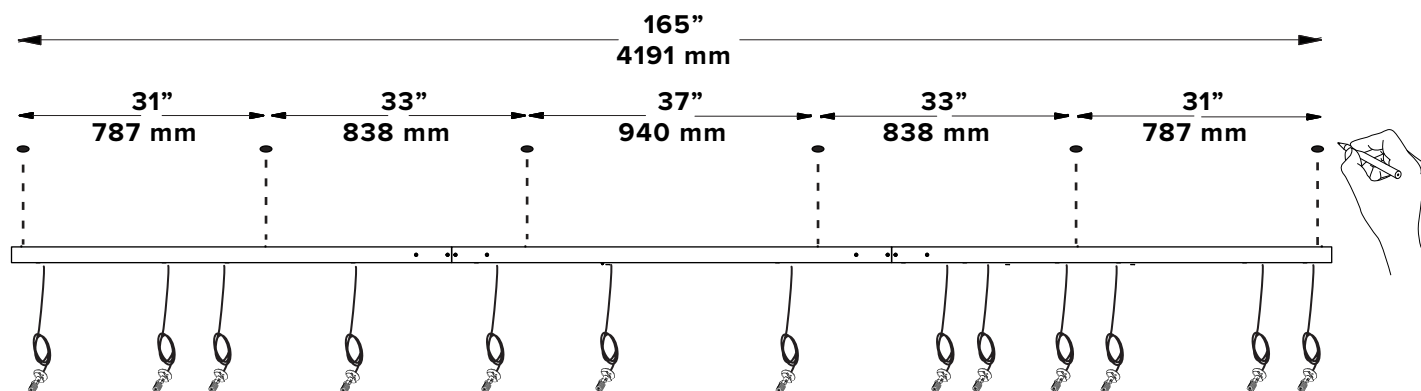
2



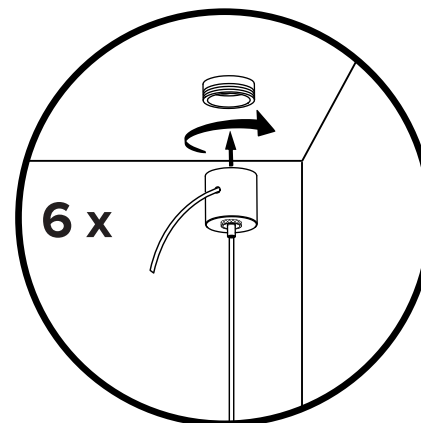
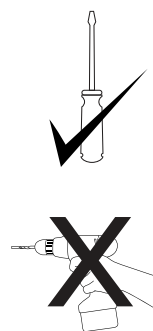
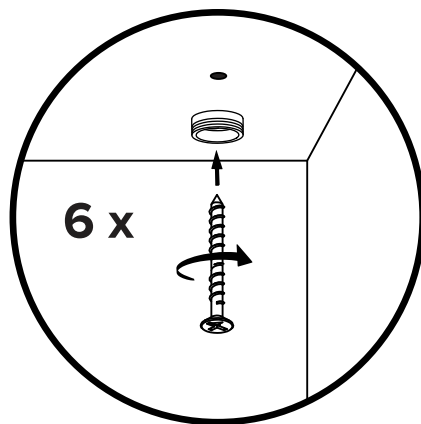
Ensure no wires are clipped or pinched during this operation.

3

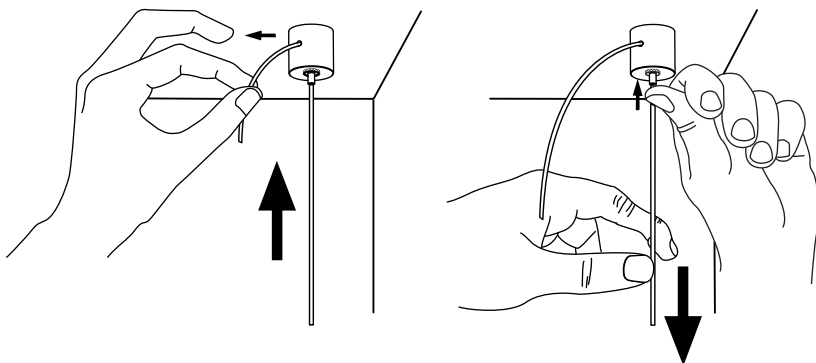
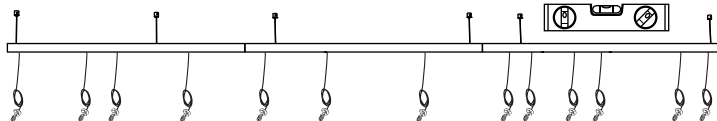
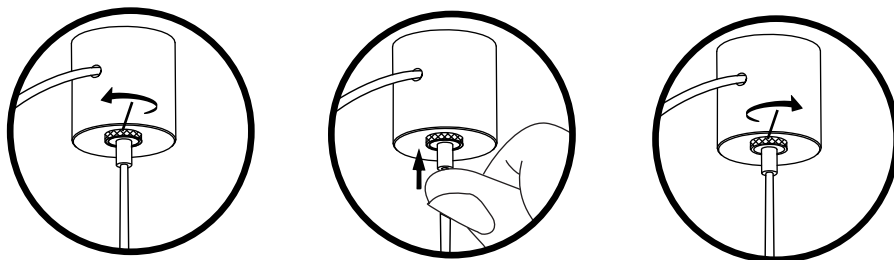
Mark anchor locations using your electrical box and canopy as a guide



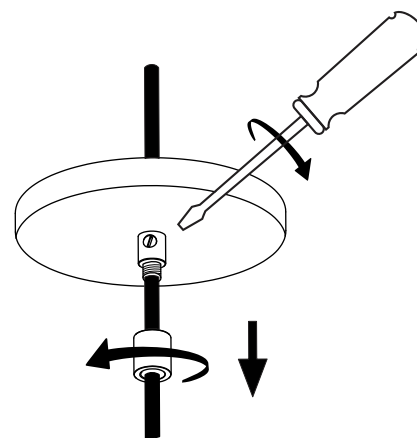
4



5



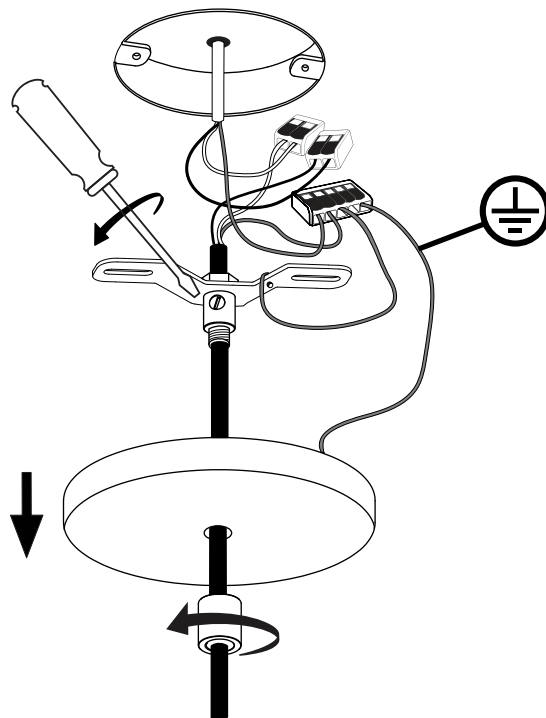
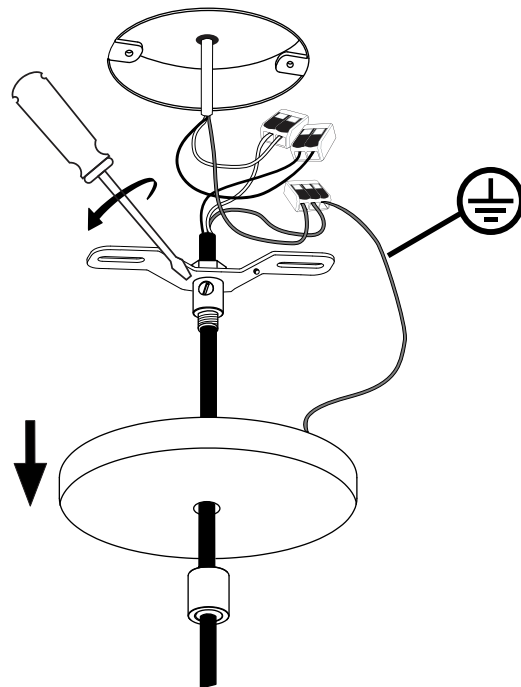
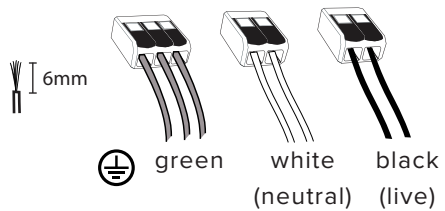
6



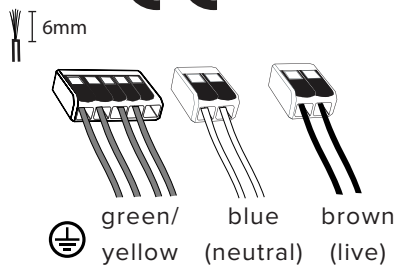
7

Tighten nylon set screw.
Make connection.

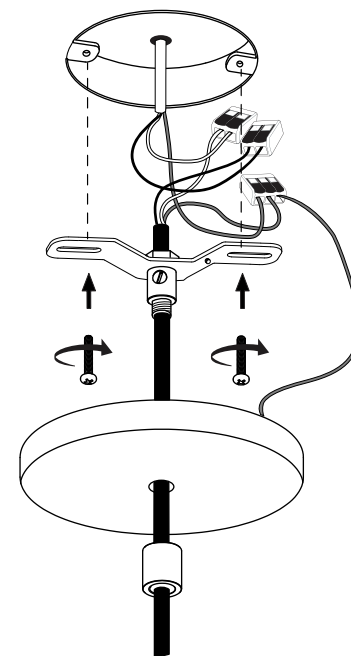
UL US
LISTED



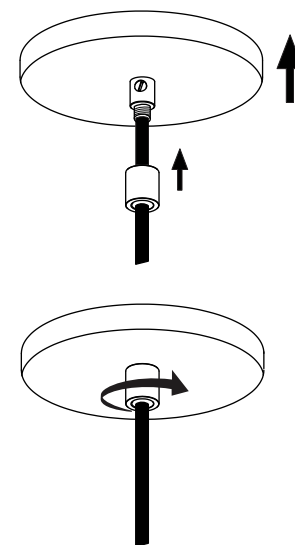
CE



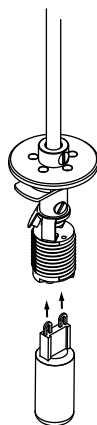
8



9

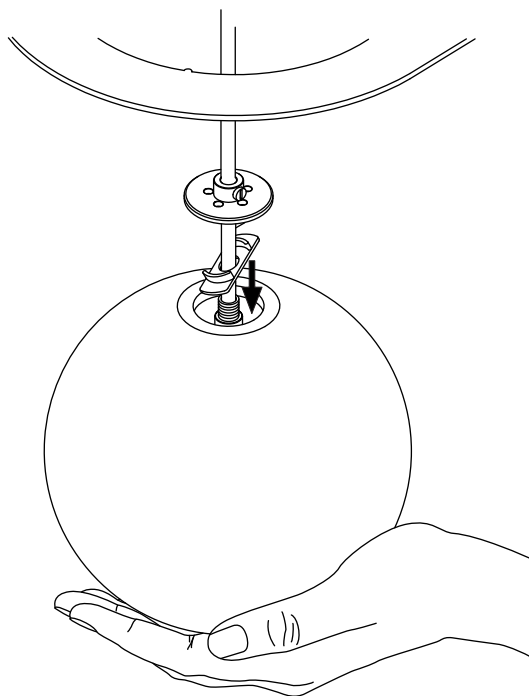


10

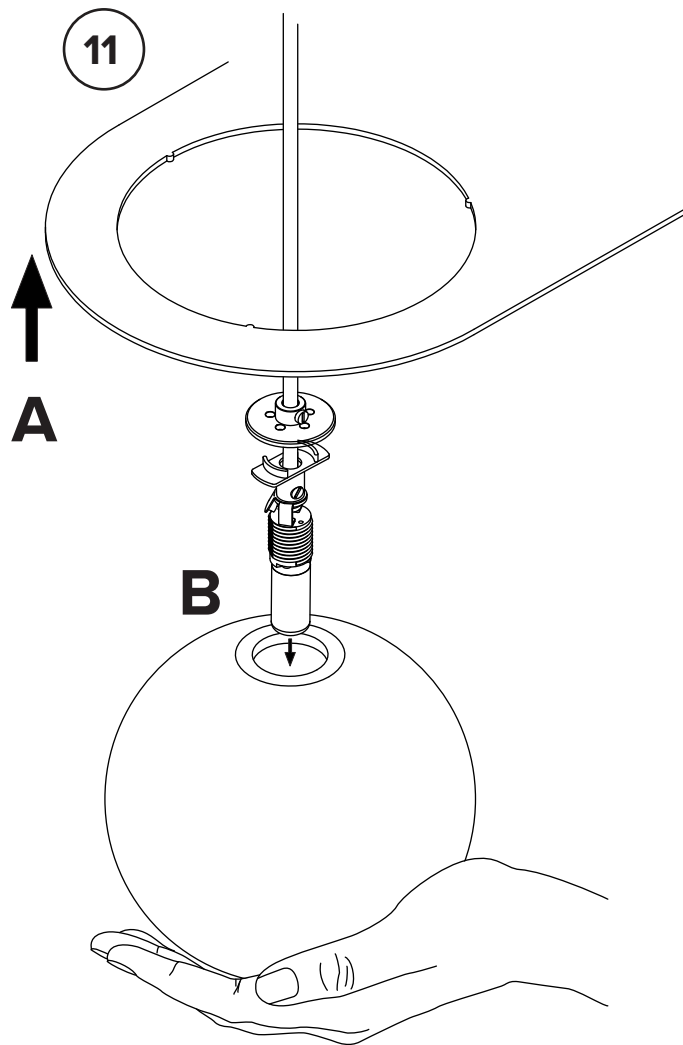
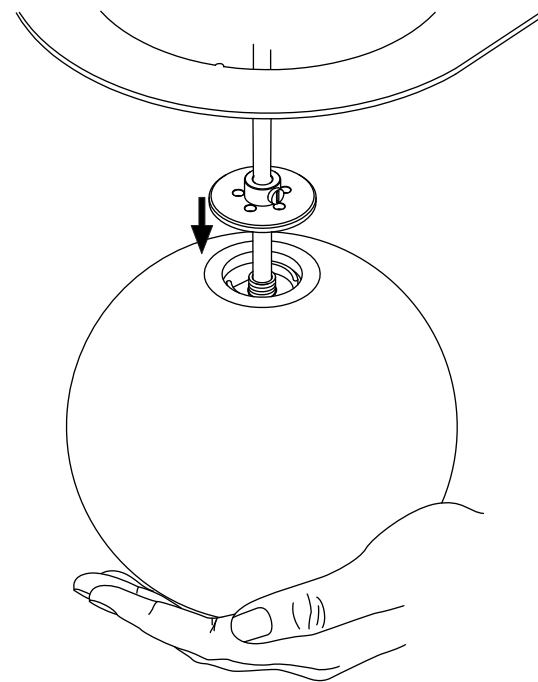


* To ensure safety,
**PLEASE FOLLOW THESE STEPS
CAREFULLY**

12

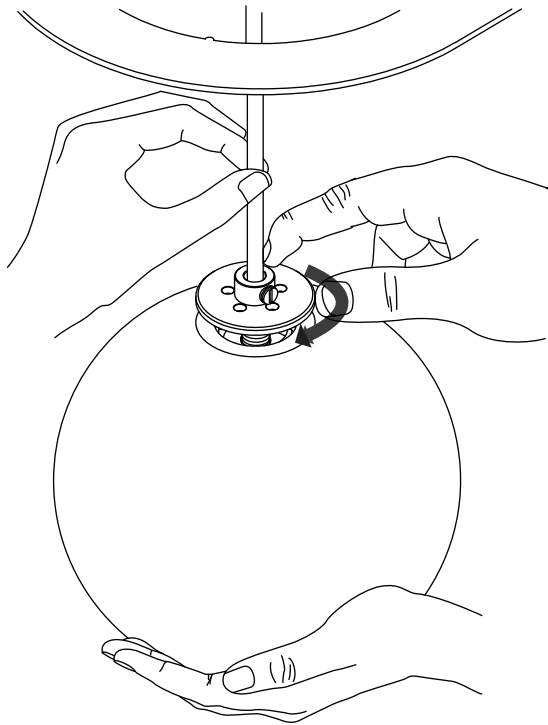


13

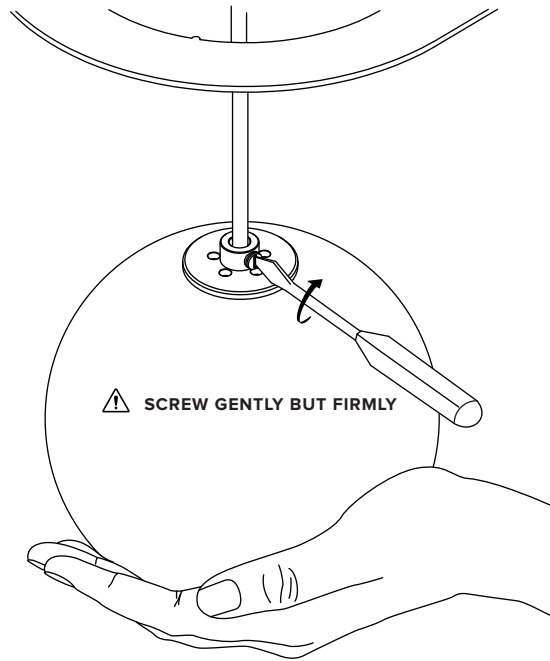


* To ensure safety,
**PLEASE FOLLOW THESE STEPS
CAREFULLY**

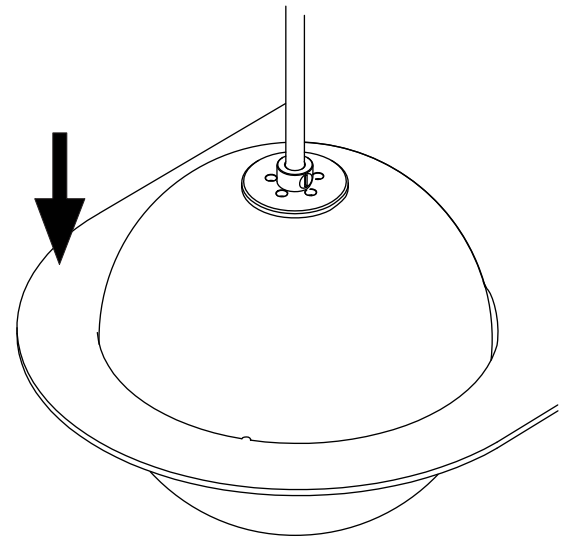
14



15



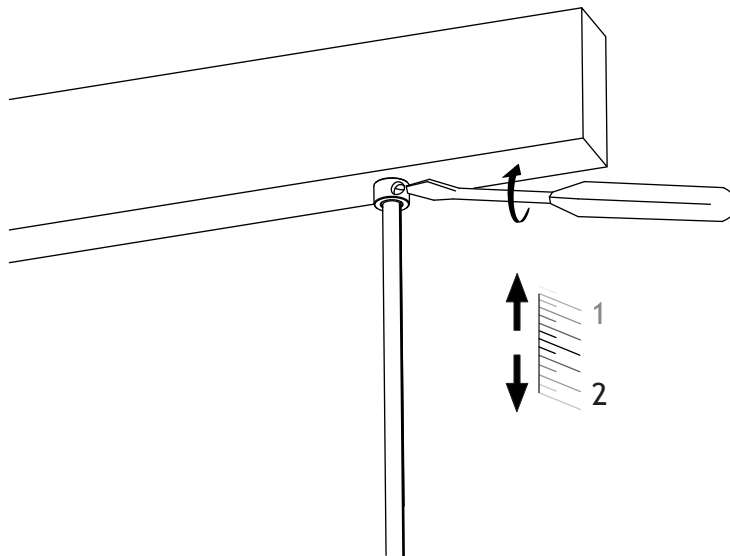
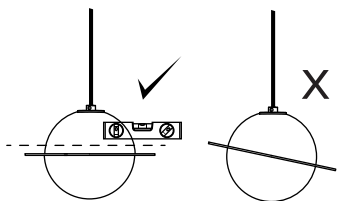
16



17

Make sure the globes are level by micro-adjusting the wire lengths.

SCREW GENTLY BUT FIRMLY



18

Trim cables when final height and level are achieved

