
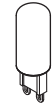


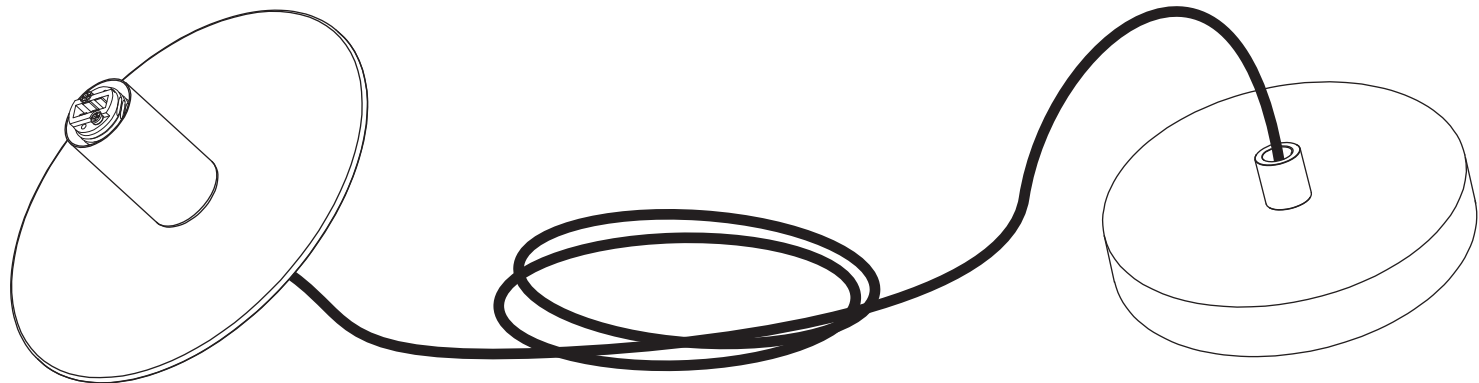
DOT SUSPENSION



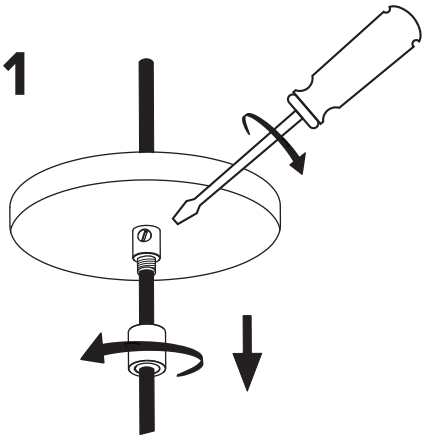
- 
- To be installed by an electrician to an electrical box
 - Use appropriate screws and anchors where necessary
 - Wear enclosed gloves when handling lamp
 - Handle materials with care. Please consult lamp maintenance sheet on our web site

1 x 
3.5W

1 x 
G50

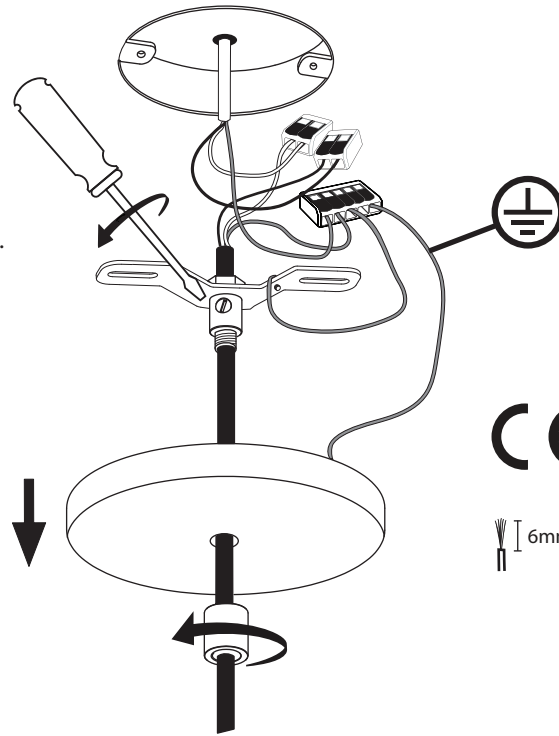


1



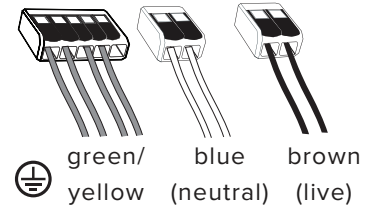
2

Tighten nylon set screw.
Make connection.

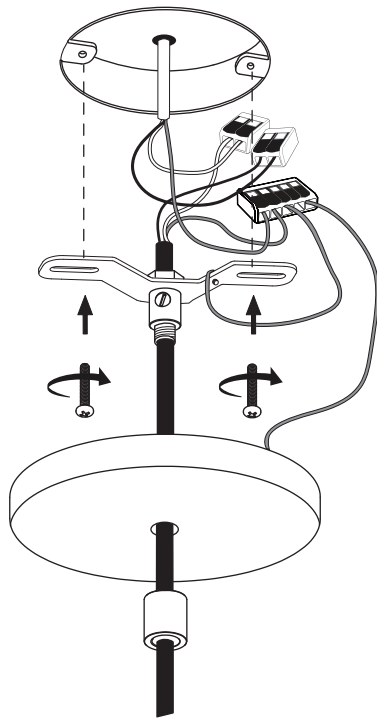


CE

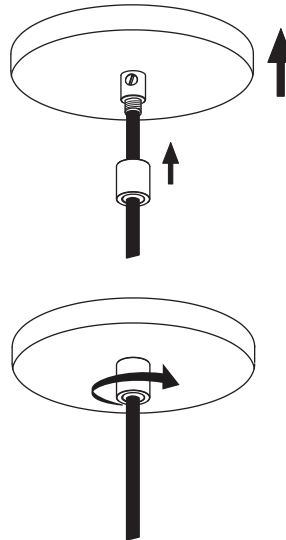
6mm



3



4



5

