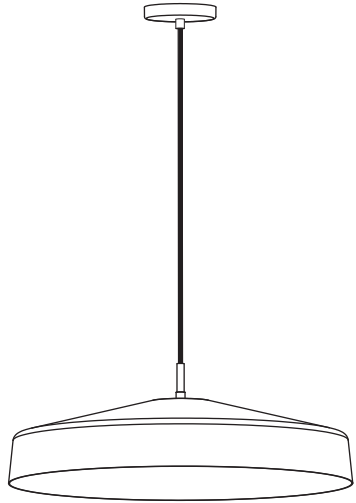



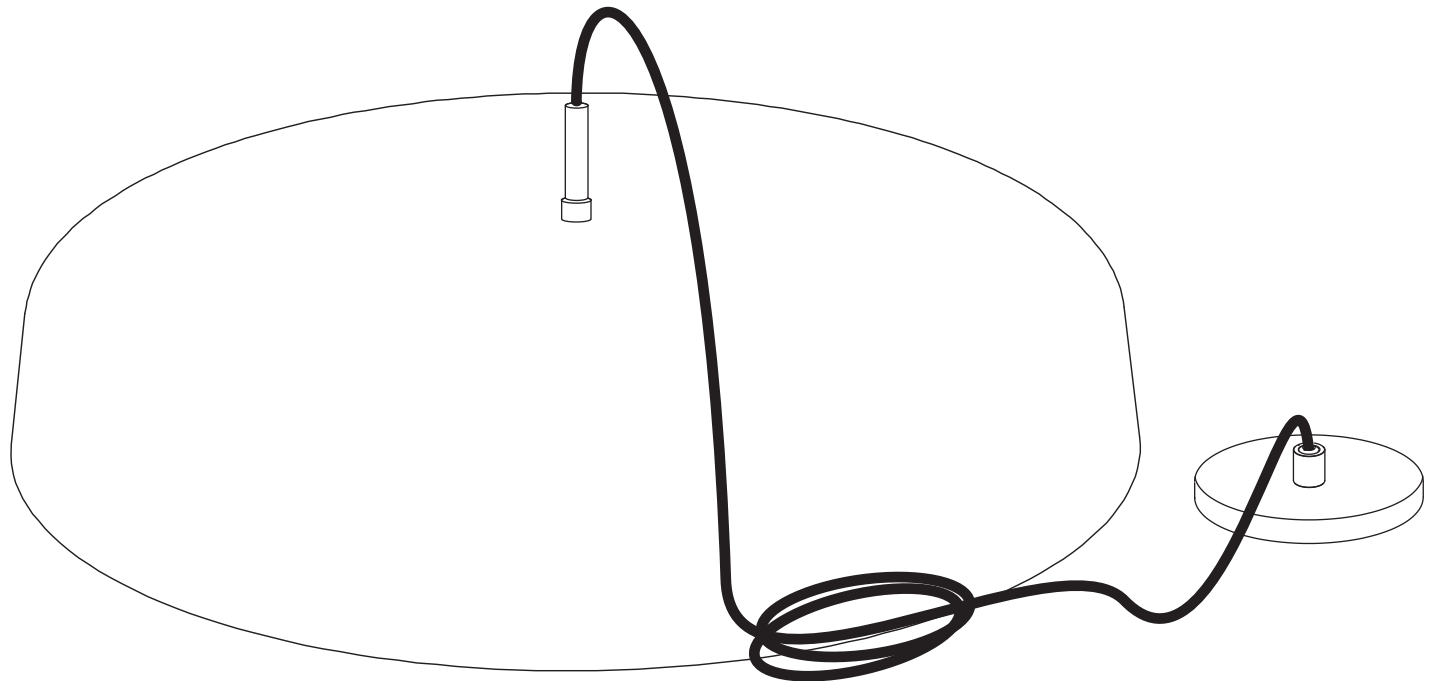
CLIFF DOME



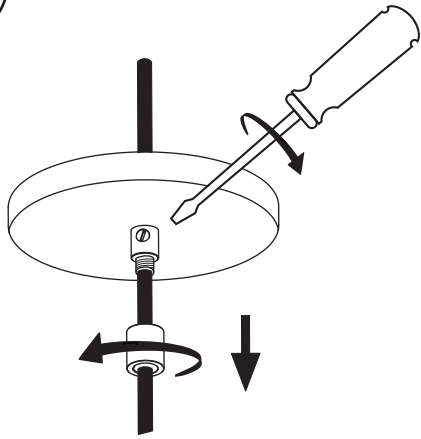
- To be installed by an electrician to an electrical box
- Use appropriate screws and anchors where necessary
- Wear enclosed gloves when handling lamp
- Handle materials with care. Please consult lamp maintenance sheet on our web site

2 x 
4.5W

2 x 

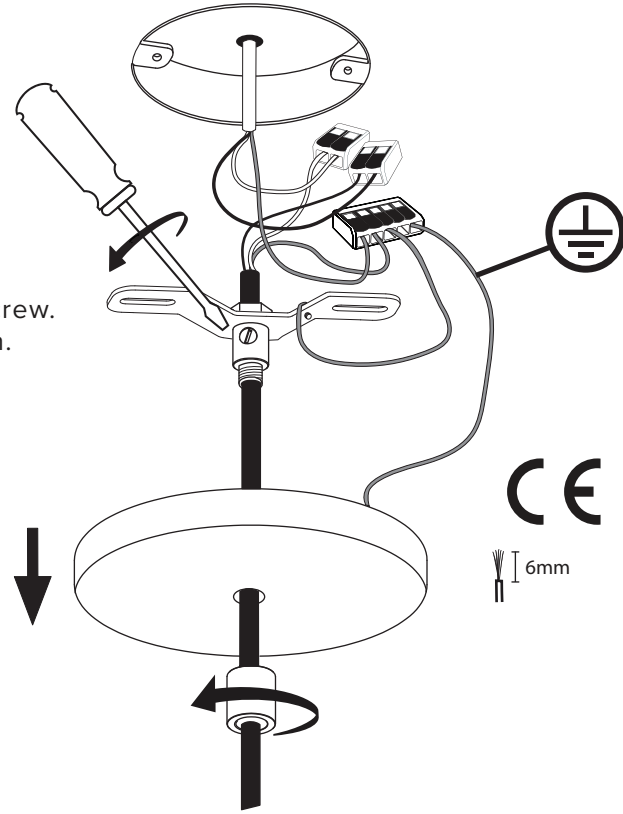


1



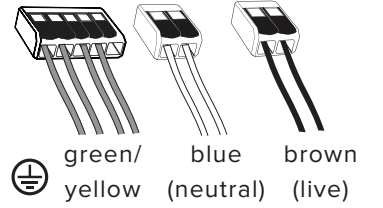
2

Tighten nylon set screw.
Make connection.

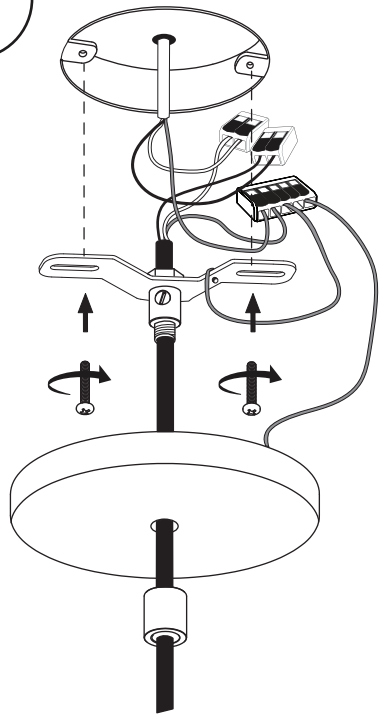


CE

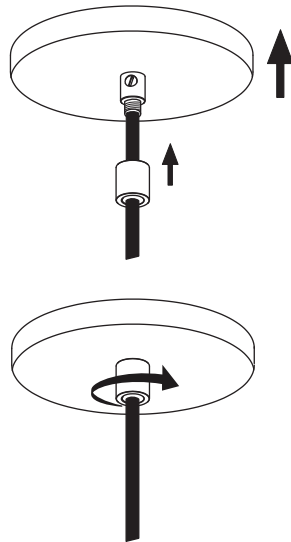
6mm



3



4



5

