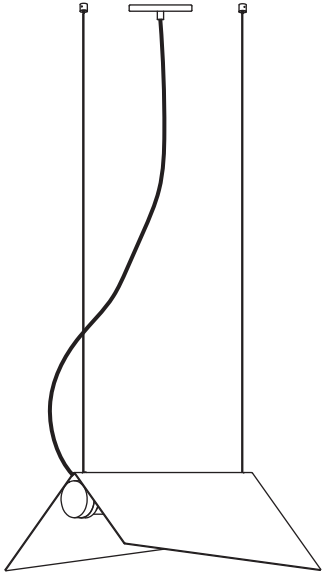



CLARK SUSPENSION


2 x  2 x 

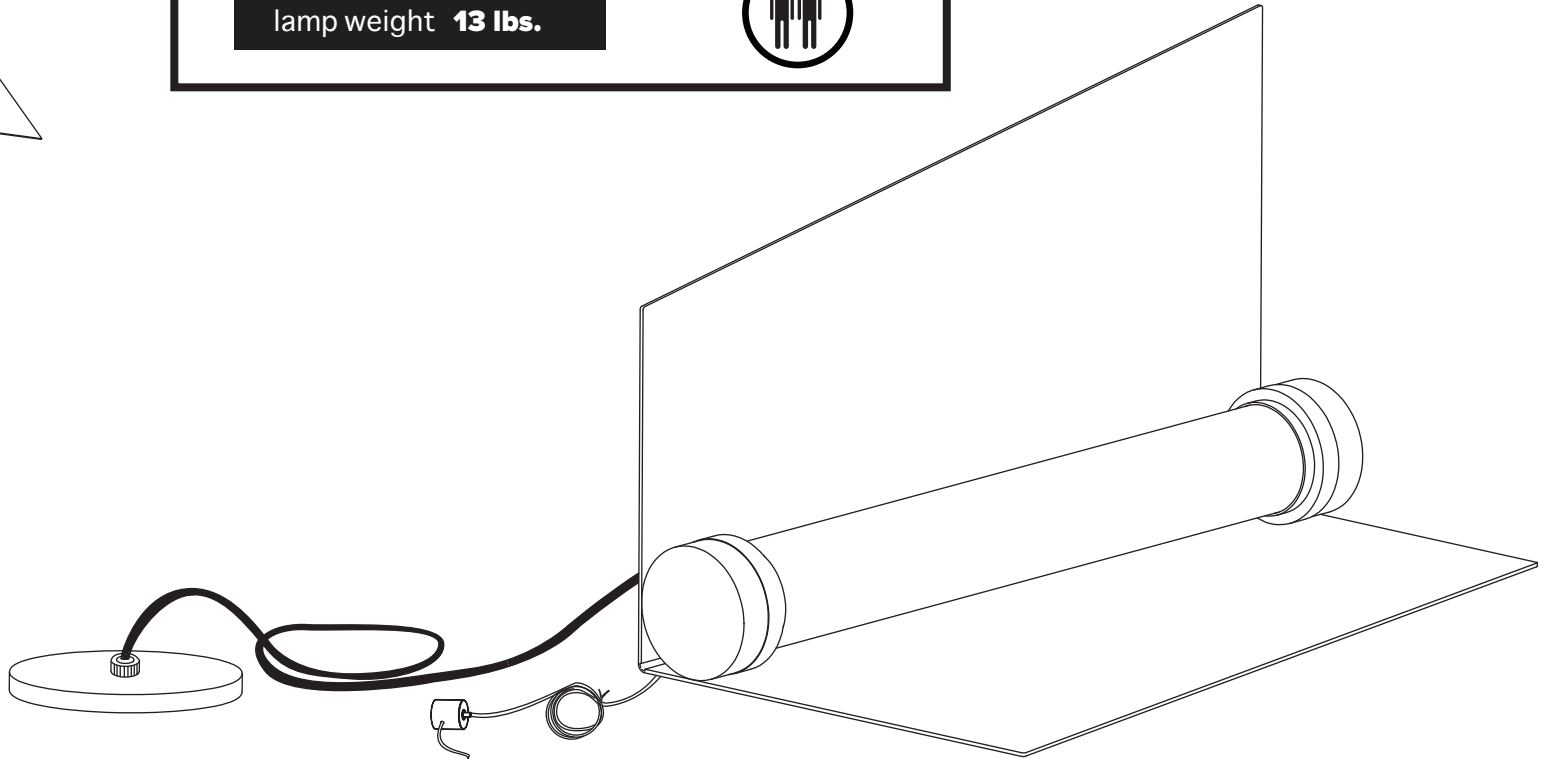


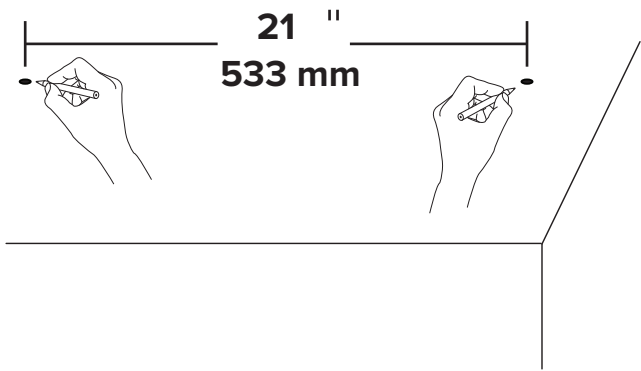


- To be installed by an electrician to an electrical box
- Use appropriate screws and anchors where necessary
- Wear enclosed gloves when handling lamp
- Handle materials with care. Please consult lamp maintenance sheet on our web site

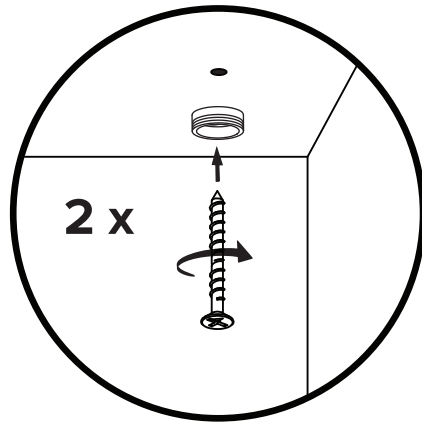
lamp weight 13 lbs.



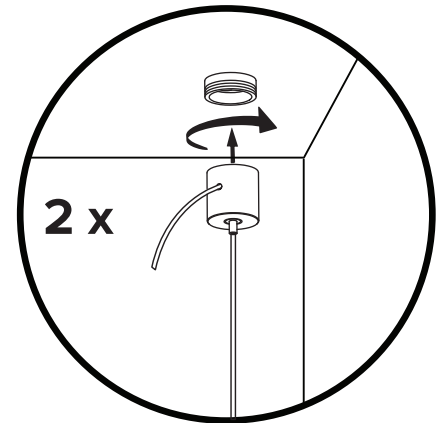
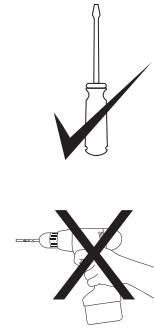




1

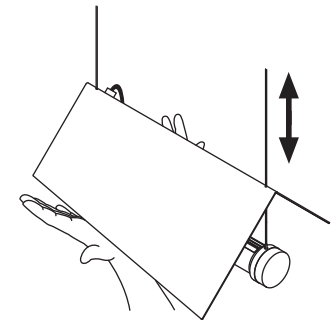
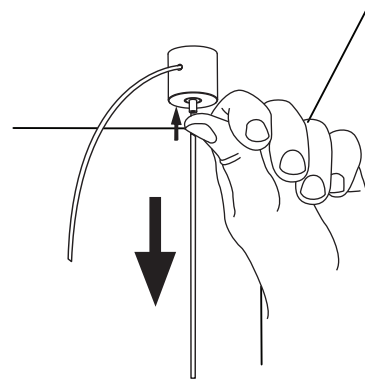
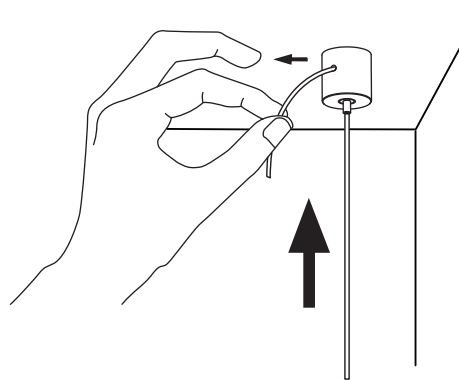
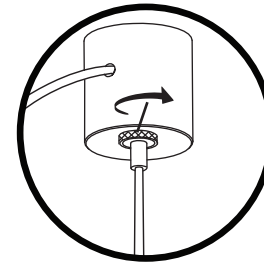
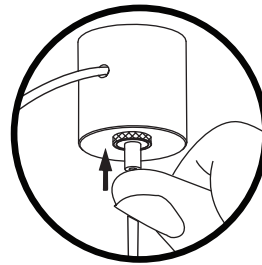
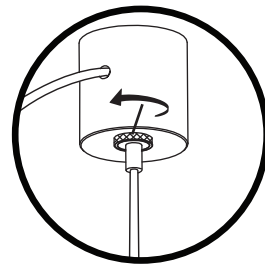
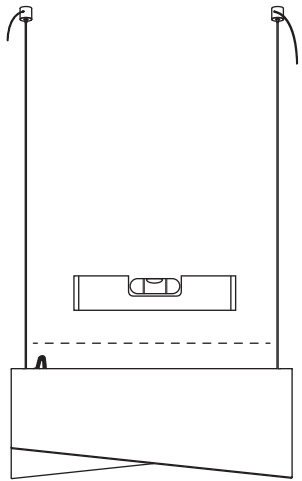


2

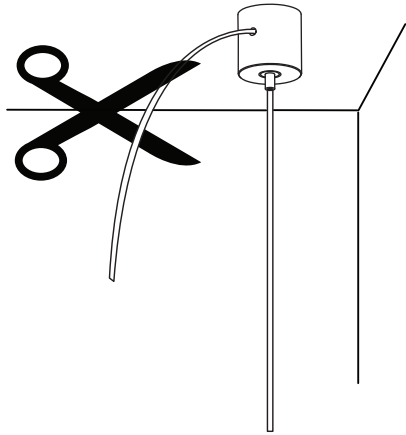


3

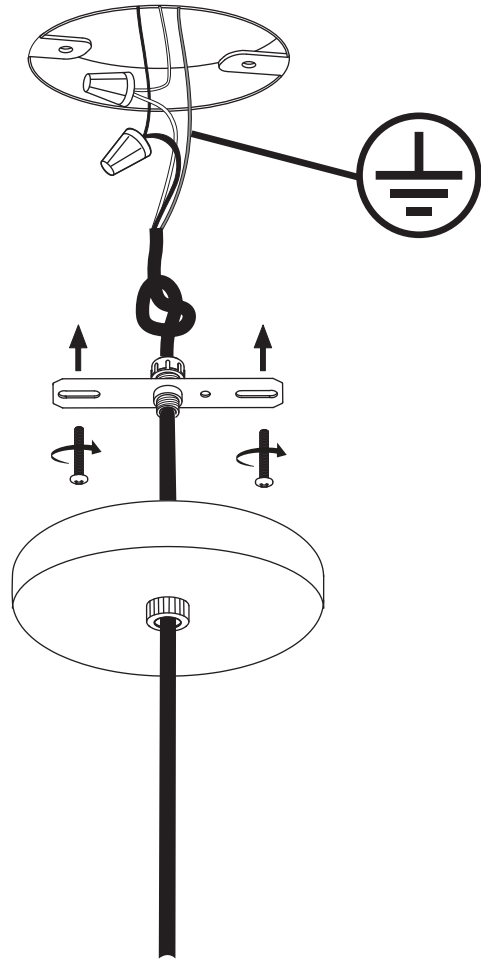
* Use appropriate anchors



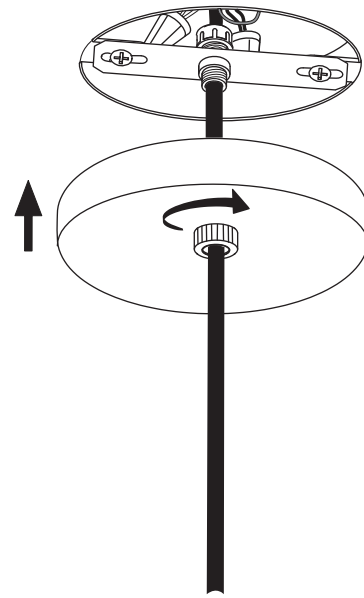
4



5



6



7

